



10°E 12°E 14°E 16°E 18°E 20°E 22°E 24°E 26°E 28°E 30°E

Ice Concentration

- Open water <1/10
- Very open ice 1-3/10
- Open ice 4-6/10
- Close ice 7-8/10
- Very close ice 9-10/10
- Level ice
- Fast ice
- Rotten ice
- New ice
  - 1-3/10
  - 4-6/10
  - 7-8/10
  - 9-10/10

- 5° Wassertemperatur
- 5°C Windspeed
- Winddirection
- Airtemperatur
- FREJ Icebreaker

66°N

64°N

62°N

60°N

58°N

56°N

54°N

66°N

64°N

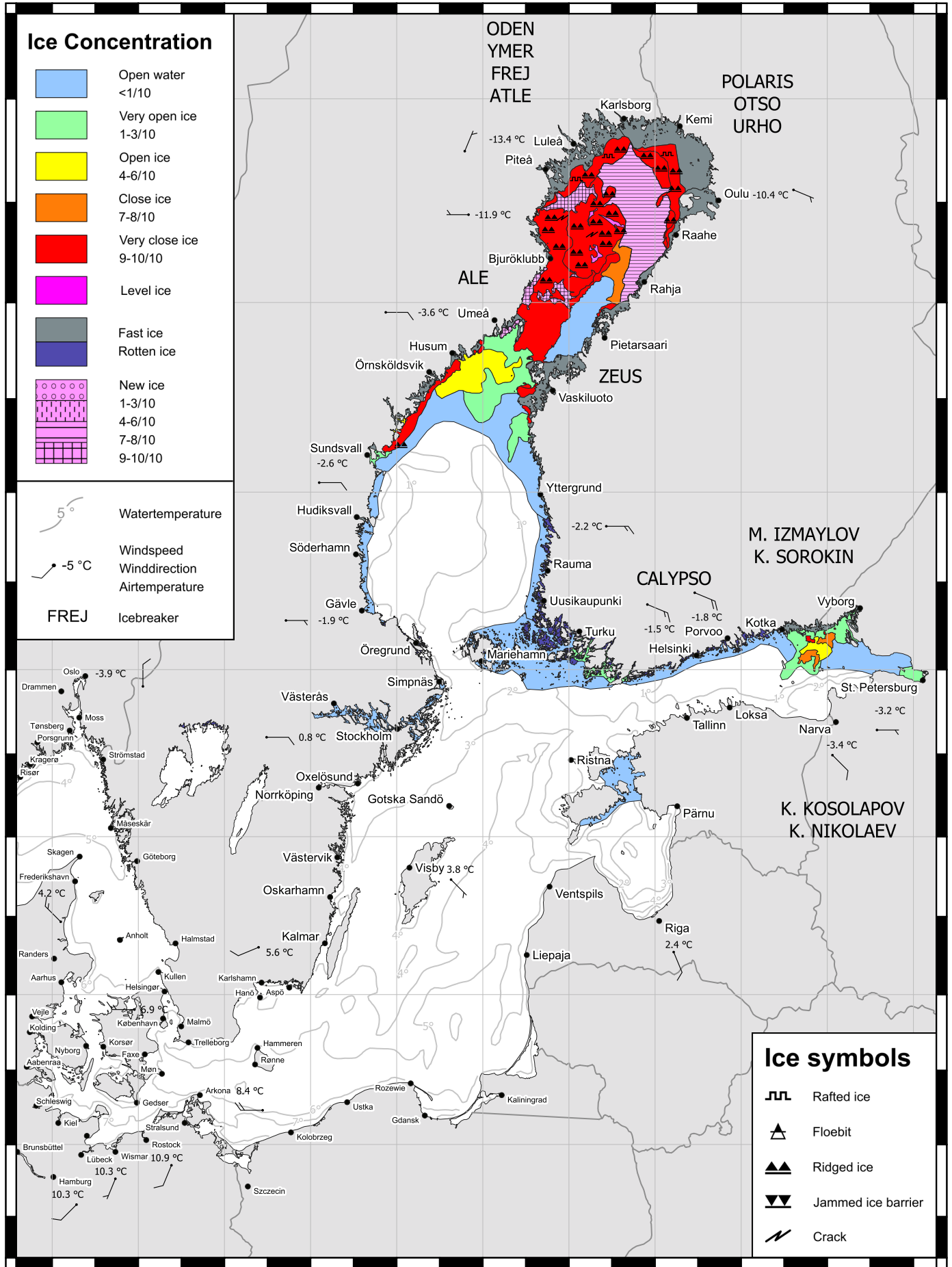
62°N

60°N

58°N

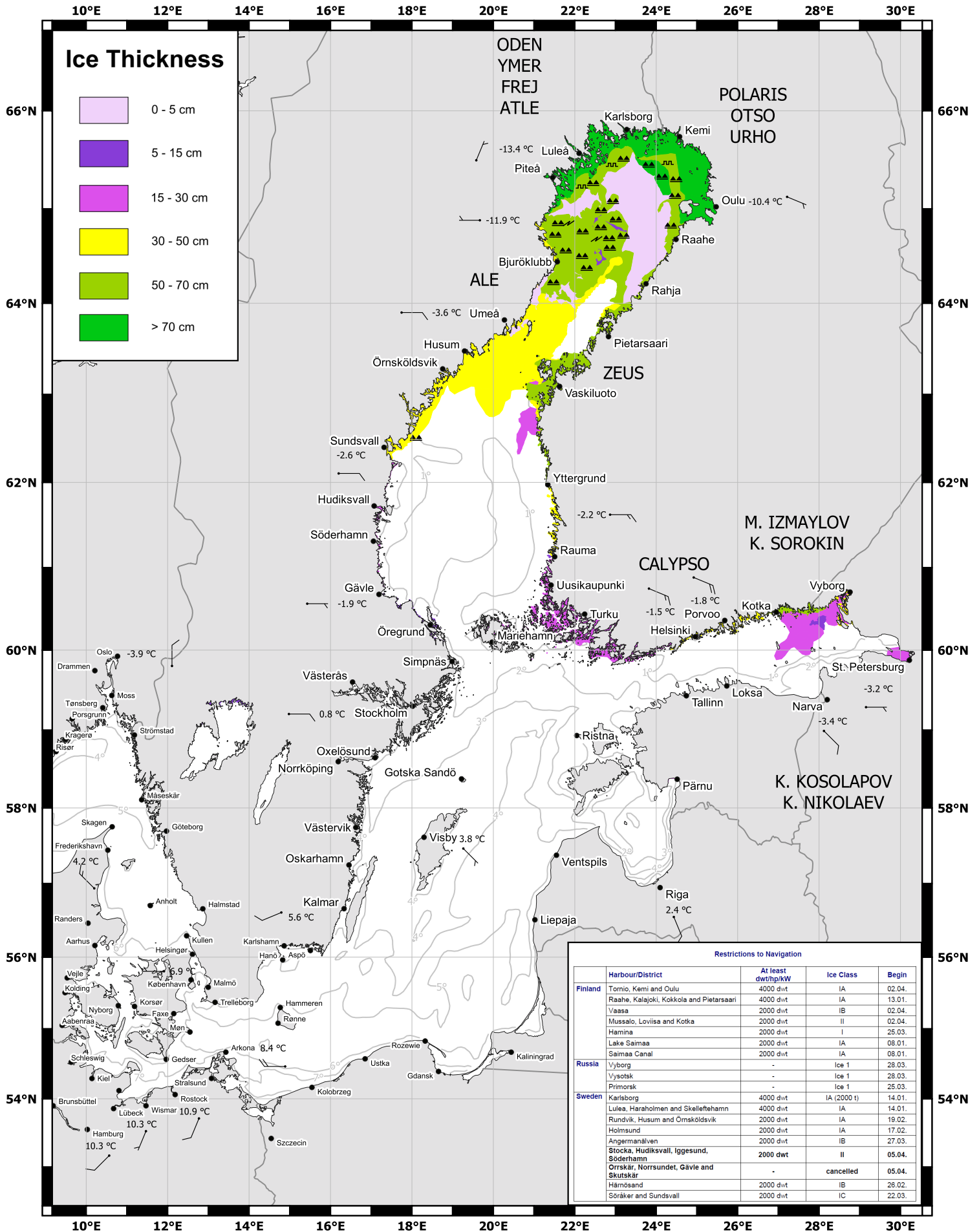
56°N

54°N



- Ice symbols**
- Rafted ice
  - Floebit
  - Ridged ice
  - Jammed ice barrier
  - Crack

10°E 12°E 14°E 16°E 18°E 20°E 22°E 24°E 26°E 28°E 30°E



Restrictions to Navigation			
Harbour/District	At least dwt/hp/kW	Ice Class	Begin
<b>Finland</b>			
Tomio, Kemi and Oulu	4000 dwt	IA	02.04.
Raahе, Kalajoki, Kokkola and Pietarsaari	4000 dwt	IA	13.01.
Vaasa	2000 dwt	IB	02.04.
Mussalo, Lovisa and Kotka	2000 dwt	II	02.04.
Hamina	2000 dwt	I	25.03.
Lake Saimaa	2000 dwt	IA	08.01.
Saimaa Canal	2000 dwt	IA	08.01.
<b>Russia</b>			
Vyborg	-	Ice 1	28.03.
Vysotsk	-	Ice 1	28.03.
Primorsk	-	Ice 1	25.03.
<b>Sweden</b>			
Karlsborg	4000 dwt	IA (2000 t)	14.01.
Lulea, Haraholmen and Skelleftehamn	4000 dwt	IA	14.01.
Rundvik, Husum and Örnsköldsvik	2000 dwt	IA	19.02.
Holmsund	2000 dwt	IA	17.02.
Angermansliven	2000 dwt	IB	27.03.
Stocka, Hudiksvall, Iggesund, Söderhamn	2000 dwt	II	05.04.
Orrskär, Norrsundet, Gävle and Skutskär	-	cancelled	05.04.
Härnösand	2000 dwt	IB	26.02.
Söråker and Sundsvall	2000 dwt	IC	22.03.