

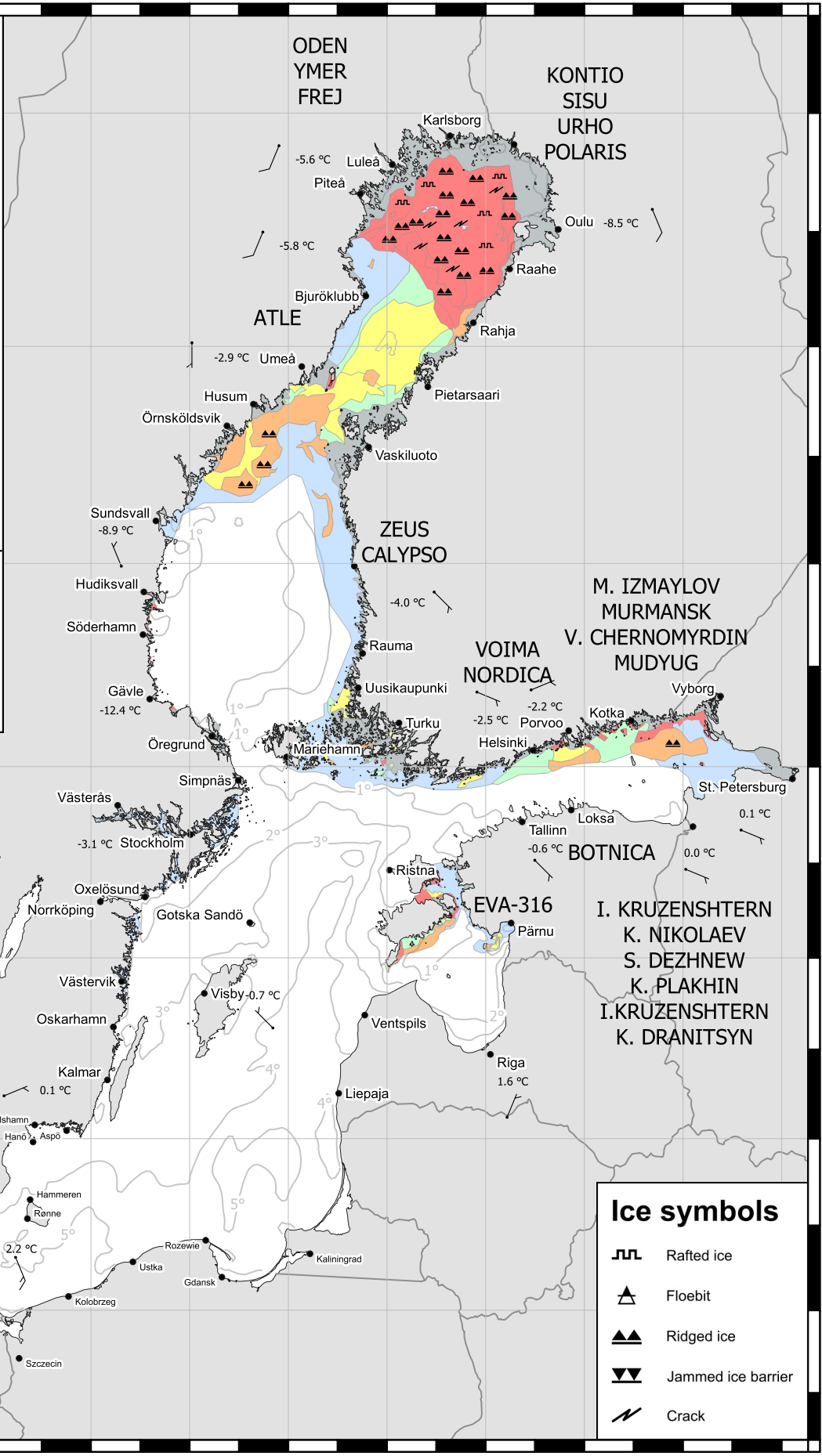


10°E 12°E 14°E 16°E 18°E 20°E 22°E 24°E 26°E 28°E 30°E

Ice Concentration

- Open water <1/10
- Very open ice 1-3/10
- Open ice 4-6/10
- Close ice 7-8/10
- Very close ice 9-10/10
- Level ice
- Fast ice
- Rotten ice
- New ice 1-3/10
- 4-6/10
- 7-8/10
- 9-10/10

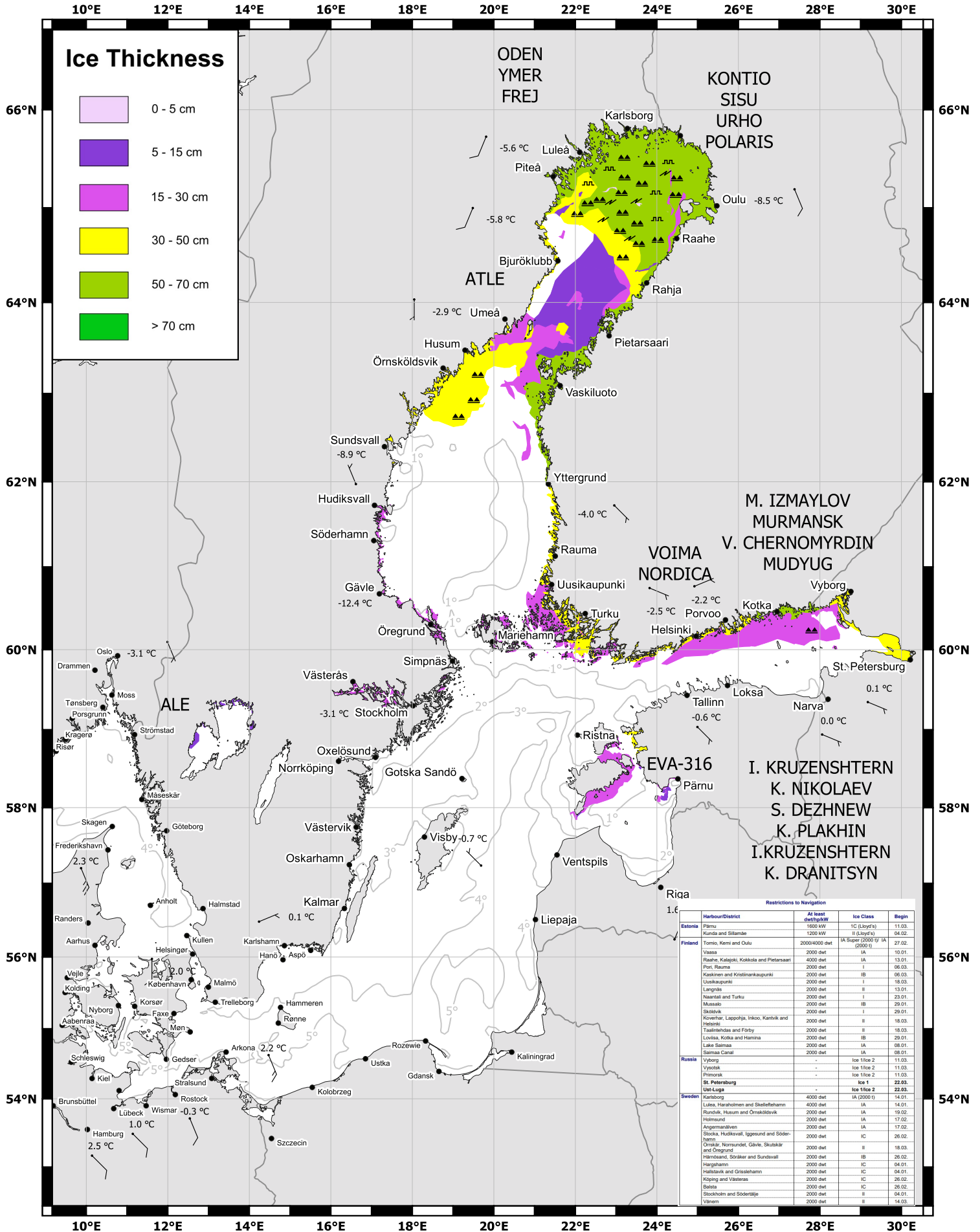
- 5° Watertemperature
- 5 °C Windspeed
- Winddirection
- Airtemperature
- FREJ Icebreaker



Ice symbols

- Rafted ice
- Floebit
- Ridged ice
- Jammed ice barrier
- Crack

10°E 12°E 14°E 16°E 18°E 20°E 22°E 24°E 26°E 28°E 30°E



Restrictions to Navigation			
Harbour/District	At least depth/m	Ice Class	Begin
Estonia			
Pärnu	1600 MW	IC (Lloyd's)	11.03.
Kunda and Sillamäe	1200 MW	II (Lloyd's)	04.02.
Finland			
Tomio, Kemi and Oulu	2000/4000 dwt	IA Super (2000 t) / IA (2000 t)	27.02.
Vaasa	2000 dwt	IA	10.01.
Raase, Kalajo, Kokkola and Pietarsaari	4000 dwt	IA	13.01.
Port, Rauma	2000 dwt	I	06.03.
Kaskinen and Kristinankaupunki	2000 dwt	IB	06.03.
Uusikaupunki	2000 dwt	I	18.03.
Längelmäki	2000 dwt	II	13.01.
Naantali and Turku	2000 dwt	I	23.01.
Mustasaari	2000 dwt	IB	29.01.
Stockholm	2000 dwt	I	29.01.
Kovelpää, Lappohja, Inkoo, Kankari and Helsinki	2000 dwt	II	18.03.
Taivassalo and Forby	2000 dwt	II	18.03.
Lovisa, Kotka and Hamina	2000 dwt	IB	29.01.
Lake Saimaa	2000 dwt	IA	08.01.
Saimaa Canal	2000 dwt	IA	08.01.
Russia			
Vyborg	-	Ice IIce 2	11.03.
Vysotsk	-	Ice IIce 2	11.03.
Piirskari	-	Ice IIce 2	11.03.
St. Petersburg	-	Ice I	22.03.
Ust-Luga	-	Ice IIce 2	22.03.
Sweden			
Karlsborg	4000 dwt	IA (2000 t)	14.01.
Luleå, Haselömen and Skelleftehamn	4000 dwt	IA	14.01.
Rundvik, Husum and Örnsköldsvik	2000 dwt	IA	19.02.
Hölmund	2000 dwt	IA	17.02.
Ängelmasömen	2000 dwt	IA	17.02.
Stockholm, Hudiksvall, Iggesund and Söderhamn	2000 dwt	IC	26.02.
Örnåker, Norsundet, Gävle, Skutskär and Öregrund	2000 dwt	I	18.03.
Härnösand, Sjöklät and Sundsvall	2000 dwt	IB	26.02.
Härjedalen	2000 dwt	IC	04.01.
Hallstadvik and Grisslehamn	2000 dwt	IC	04.01.
Köping and Västerås	2000 dwt	IC	26.02.
Balsta	2000 dwt	IC	26.02.
Stockholm and Södertälje	2000 dwt	IC	04.01.
Väner	2000 dwt	II	14.03.