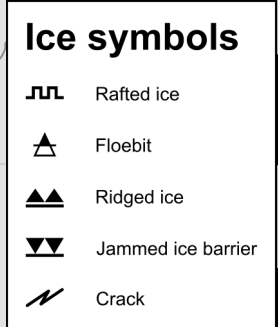
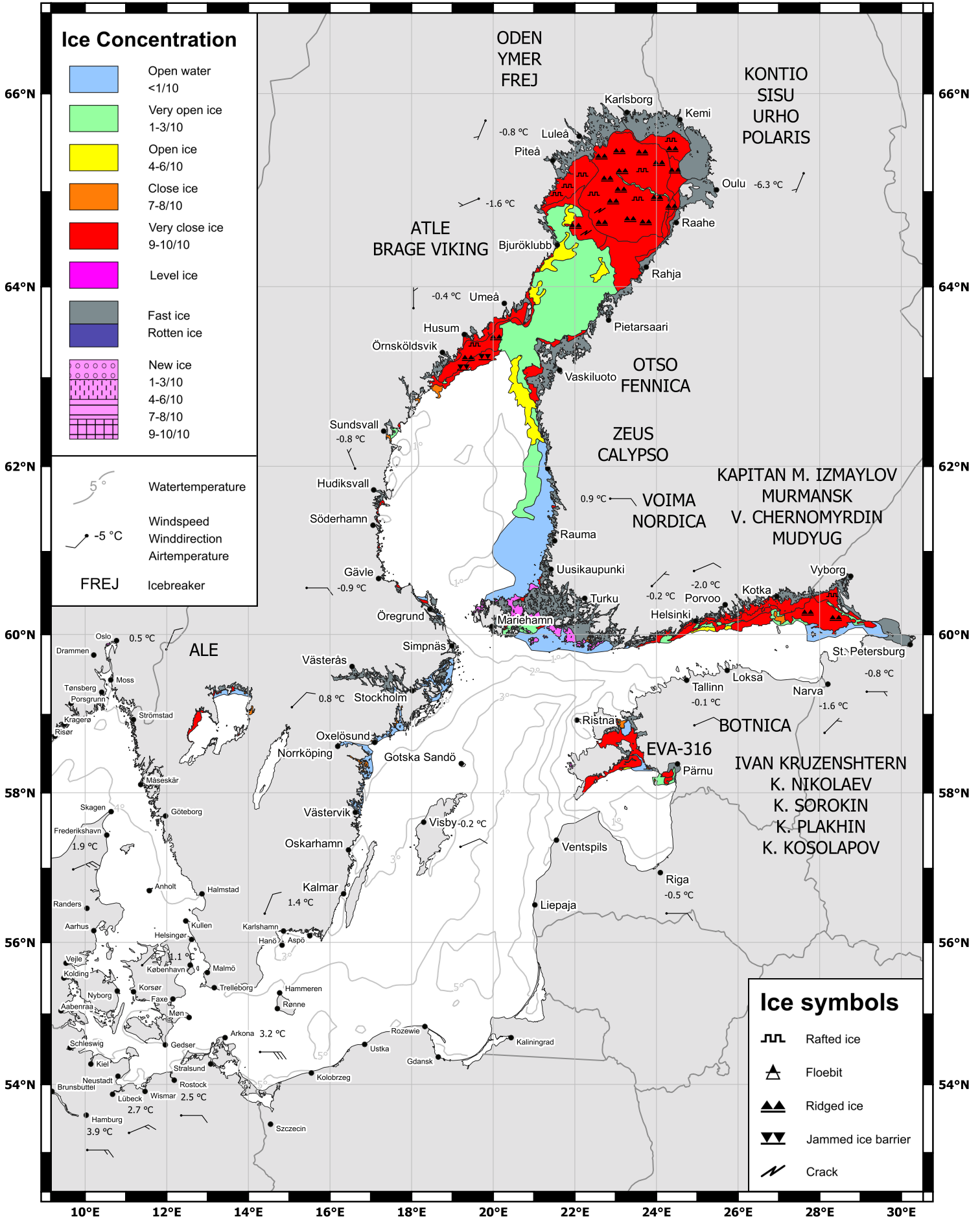
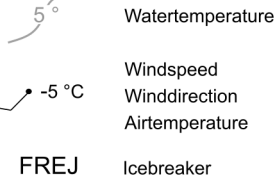
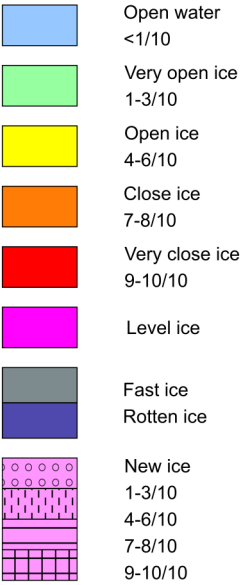
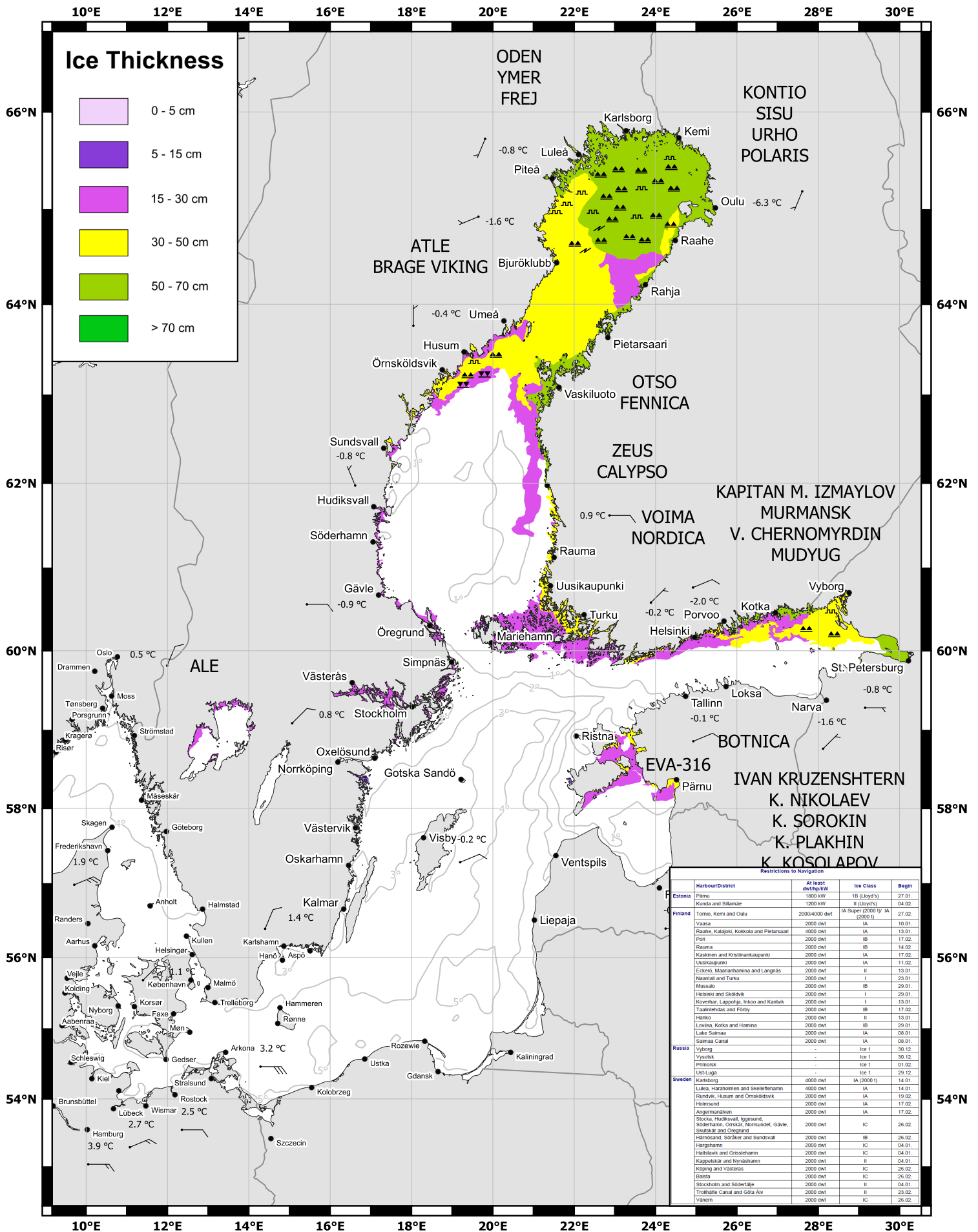




10°E 12°E 14°E 16°E 18°E 20°E 22°E 24°E 26°E 28°E 30°E

Ice Concentration





Harbour/District	At least dwt/tpkw	Ice Class	Begin
Estonia			
Pärnu	1800 dwt	IB (IcyF5)	27.01
Kunda and Sillamäe	1200 dwt	II (IcyF3)	04.02
Finland			
Tampere, Kemi and Oulu	2000/4000 dwt	IA Super (IcyF1) IA (2000 t)	27.02
Vaasa	2000 dwt	IA	10.01
Raahel, Kalajo, Kokkola and Pietarsaari	4000 dwt	IA	13.01
Pori	2000 dwt	IB	17.02
Rauma	2000 dwt	IB	14.02
Kaivaniemi and Kristinankaupunki	2000 dwt	IA	17.02
Uusikaupunki	2000 dwt	IA	11.02
Eckerö, Maarianhamina and Langnäs	2000 dwt	II	13.01
Nasantal and Turku	2000 dwt	I	23.01
Mussalo	2000 dwt	IB	29.01
Helsinki and Skokholm	2000 dwt	I	29.01
Koverhar, Lappohja, Inkoo and Kaivari	2000 dwt	I	13.01
Taivassalo and Förby	2000 dwt	IB	17.02
Hanko	2000 dwt	IA	13.01
Lovikka, Kotka and Hamina	2000 dwt	IB	29.01
Lake Salmaa	2000 dwt	IA	08.01
Saimaa Canal	2000 dwt	IA	08.01
Russia			
Vyborg	-	Ice 1	30.12
Vyrostk	-	Ice 1	30.12
Primorsk	-	Ice 1	01.02
Ust-Luga	-	Ice 1	29.12
Sweden			
Karlsborg	4000 dwt	IA (2000 t)	14.01
Luleå, Narvikhamnen and Skelleftehamn	2000 dwt	IA	14.01
Rundvik, Husum and Örnsköldsvik	2000 dwt	IA	19.02
Holmsund	2000 dwt	IA	17.02
Ångermanälven	2000 dwt	IA	17.02
Stocka, Hattuvall, Iggesund, Söderhamn, Ornsär, Norrsundet, Gävle, Skutumpah and Öregrund	2000 dwt	IC	26.02
Härnösand, Sörcker and Sundsvall	2000 dwt	IB	26.02
Härghamn	2000 dwt	IC	04.01
Hälsjövik and Ornsöhamn	2000 dwt	IC	04.01
Kapelskärs and Nynäshamn	2000 dwt	II	04.01
Köping and Västerås	2000 dwt	IC	26.02
Balsta	2000 dwt	IC	26.02
Stockholm and Södertälje	2000 dwt	II	04.01
Tromsö Canal and Gota Älv	2000 dwt	II	23.02
Väner	2000 dwt	IC	26.02