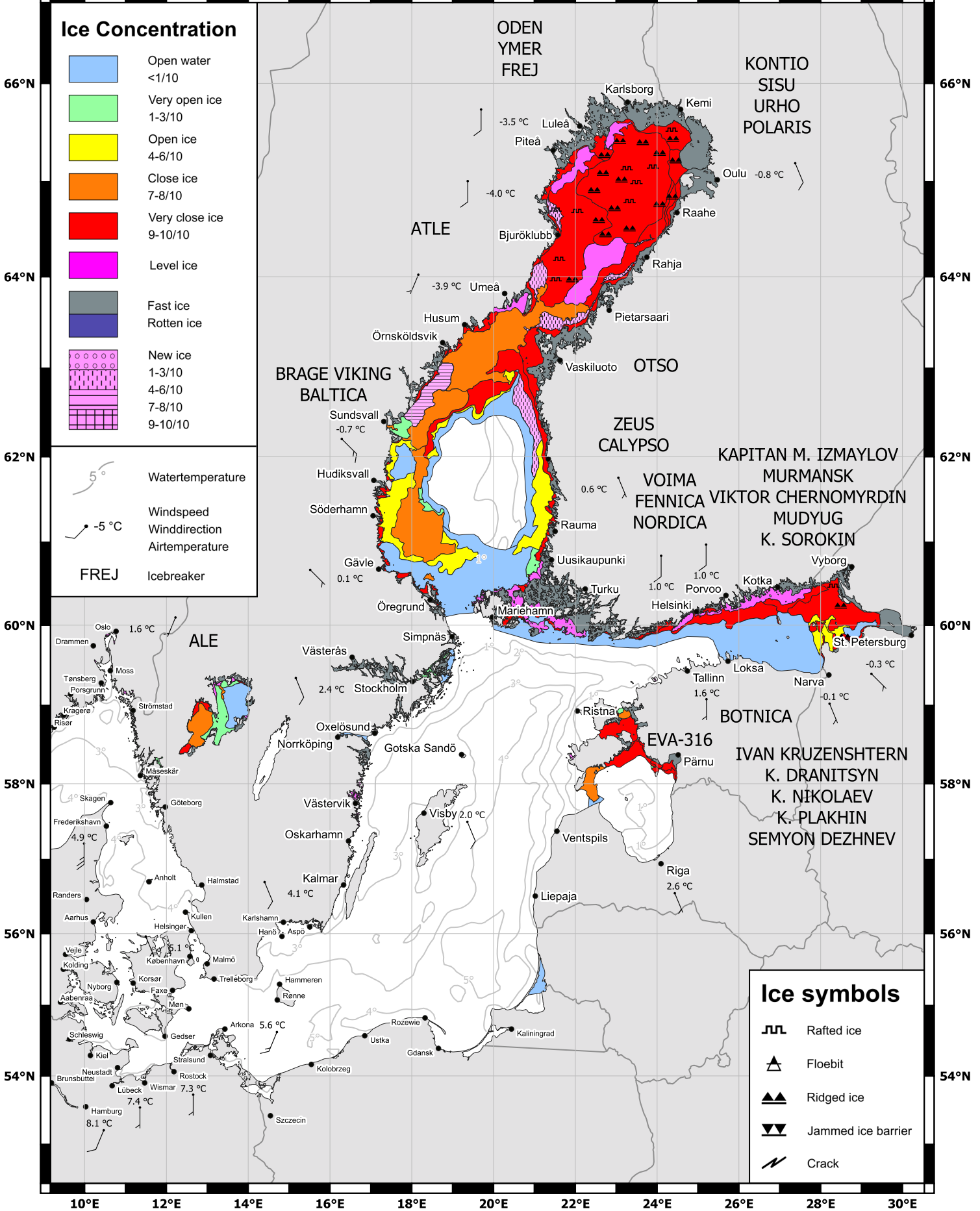
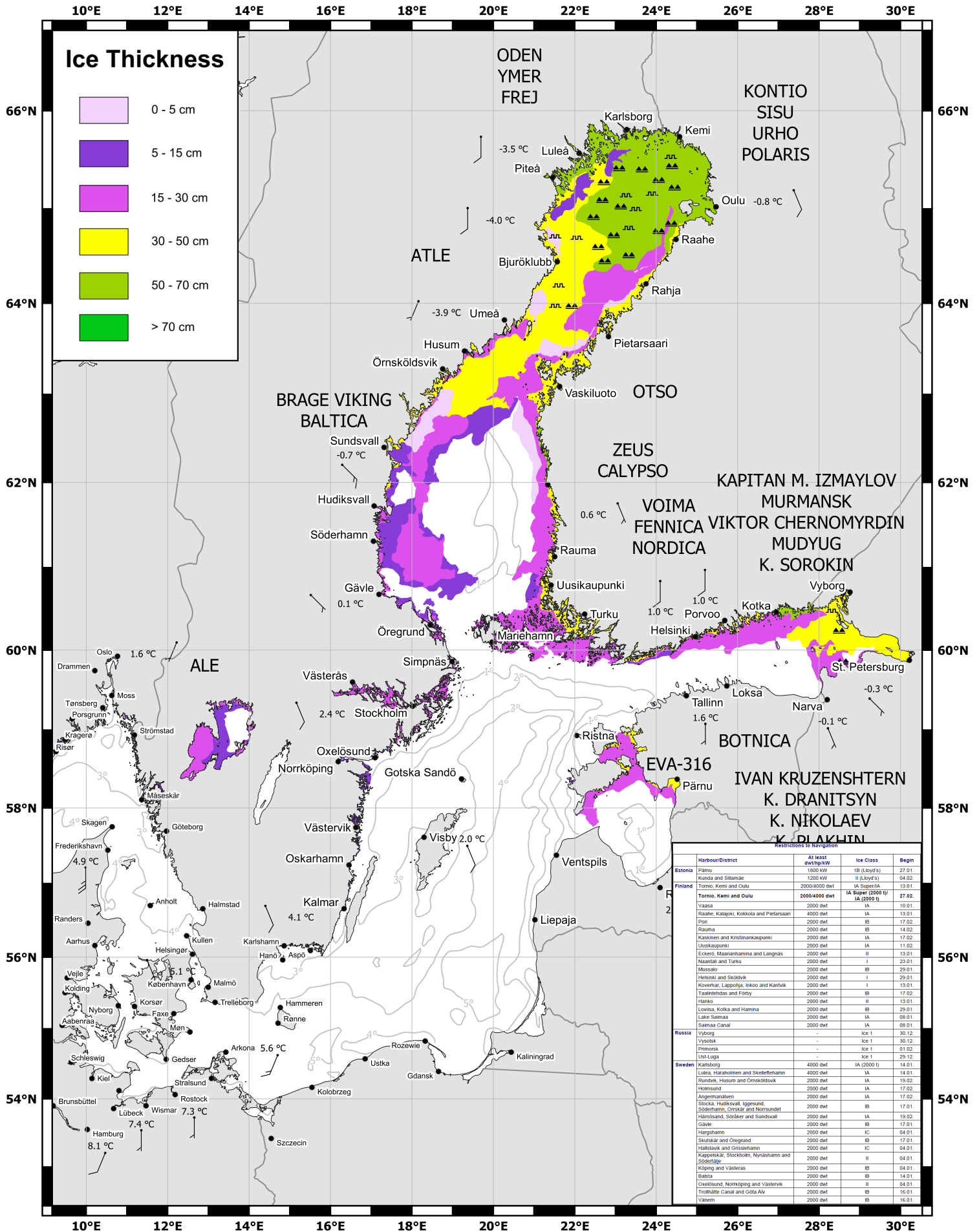




10°E 12°E 14°E 16°E 18°E 20°E 22°E 24°E 26°E 28°E 30°E



10°E 12°E 14°E 16°E 18°E 20°E 22°E 24°E 26°E 28°E 30°E



| Harbour/District | At least dwt/tp/kW | Ice Class | Begin |
|---|--------------------|--------------------------------|-------|
| Estonia | | | |
| Pärnu | 1950 kW | IB (Lloyd's) | 27.01 |
| Kunda and Sillamäe | 1200 kW | II (Lloyd's) | 04.02 |
| Finland | | | |
| Tornio, Kemi and Oulu | 2000/4000 dwt | IA, Super IA | 13.01 |
| Tornio, Kemi and Oulu | 2000/4000 dwt | IA Super (2000 tp) IA (2500 t) | 27.02 |
| Vaasa | 2000 dwt | IA | 10.01 |
| Raahel, Kauppi, Kokkola and Pietarsaari | 4000 dwt | IA | 13.01 |
| Pori | 2000 dwt | IB | 17.02 |
| Rauma | 2000 dwt | IB | 14.02 |
| Kaskinen and Kristinankaupunki | 2000 dwt | IA | 17.02 |
| Uusikaupunki | 2000 dwt | IA | 11.02 |
| Eckeri, Maarahamina and Langnas | 2000 dwt | IA | 13.01 |
| Nantali and Turku | 2000 dwt | I | 23.01 |
| Mussalo | 2000 dwt | IB | 29.01 |
| Helsinki and Sköldvik | 2000 dwt | I | 29.01 |
| Koverhar, Lapploga, Inkoo and Karkky | 2000 dwt | II | 13.01 |
| Taivassalo and Forby | 2000 dwt | IB | 17.02 |
| Hanko | 2000 dwt | II | 13.01 |
| Lovisa, Kotka and Hamina | 2000 dwt | IB | 29.01 |
| Laine-Suoma | 2000 dwt | IA | 08.01 |
| Saimaa Canal | 2000 dwt | IA | 08.01 |
| Russia | | | |
| Vyborg | - | Ice 1 | 30.12 |
| Vysotsk | - | Ice 1 | 30.12 |
| Primorsk | - | Ice 1 | 01.02 |
| Ust-Luga | - | Ice 1 | 29.12 |
| Sweden | | | |
| Karlsborg | 4000 dwt | IA (2000 t) | 14.01 |
| Luleå, Harabolmen and Skelleftehamn | 4000 dwt | IA | 14.01 |
| Rundvik, Husum and Ormsköldsvik | 2000 dwt | IA | 19.02 |
| Hälösand | 2000 dwt | IA | 17.02 |
| Ängemånalen | 2000 dwt | IA | 17.02 |
| Stocka, Hudiksvall, Iggesund, Söderhamn, Ornsköldsvik and Norsundet | 2000 dwt | IB | 17.01 |
| Hälösand, Söcker and Sundsvall | 2000 dwt | IA | 19.02 |
| Gävle | 2000 dwt | IB | 17.01 |
| Härnäs | 2000 dwt | IC | 04.01 |
| Skutskär and Öregund | 2000 dwt | IB | 17.01 |
| Hälstavik and Grisslehamn | 2000 dwt | IC | 04.01 |
| Kappelaar, Stockholm, Nynäshamn and Söderålära | 2000 dwt | II | 04.01 |
| Köping and Västera | 2000 dwt | IB | 04.01 |
| Babsta | 2000 dwt | IB | 14.01 |
| Öxelösund, Norrköping and Västervik | 2000 dwt | II | 04.01 |
| Tromsø Canal and Cote d'Alv | 2000 dwt | IB | 16.01 |
| Väner | 2000 dwt | IB | 16.01 |