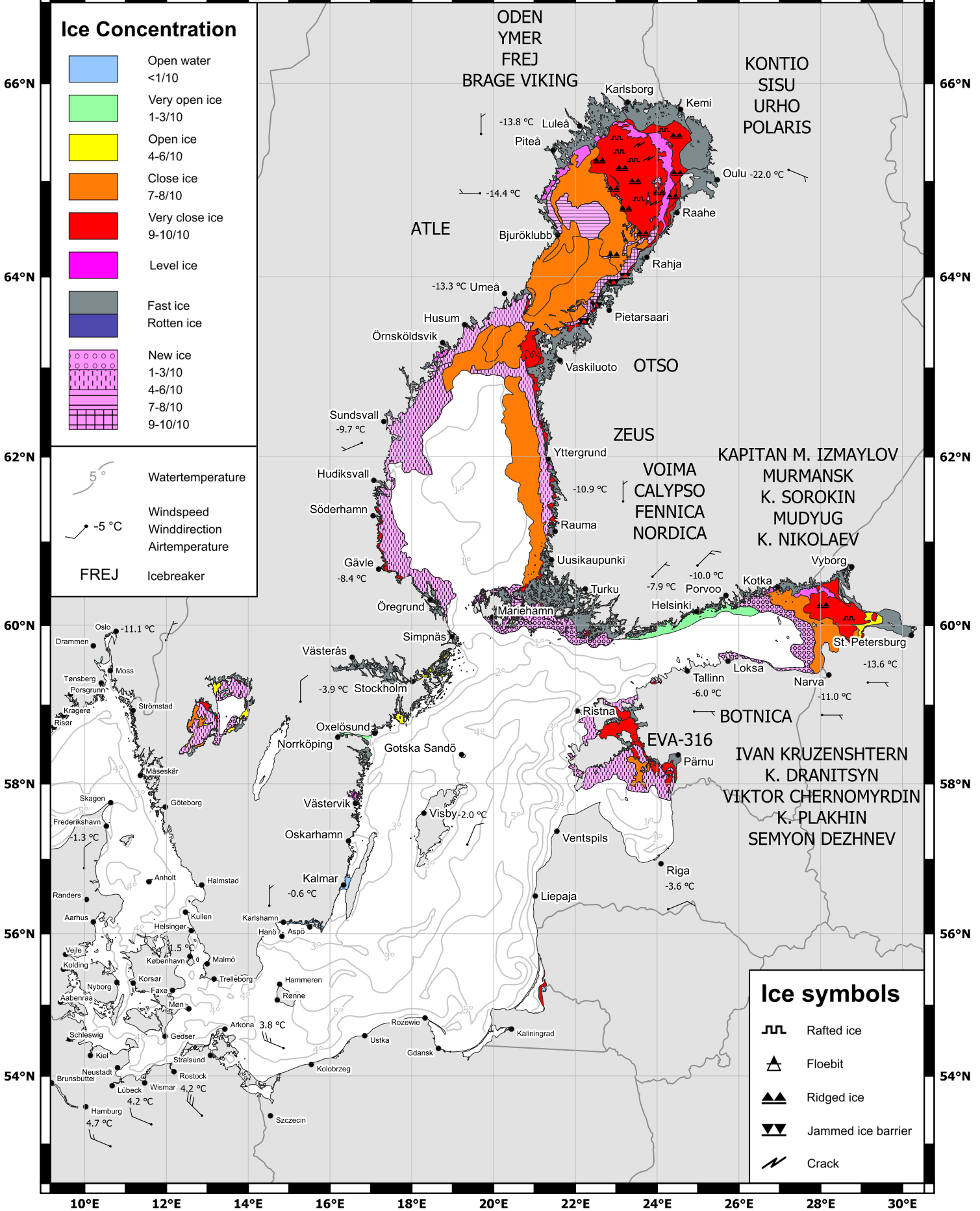




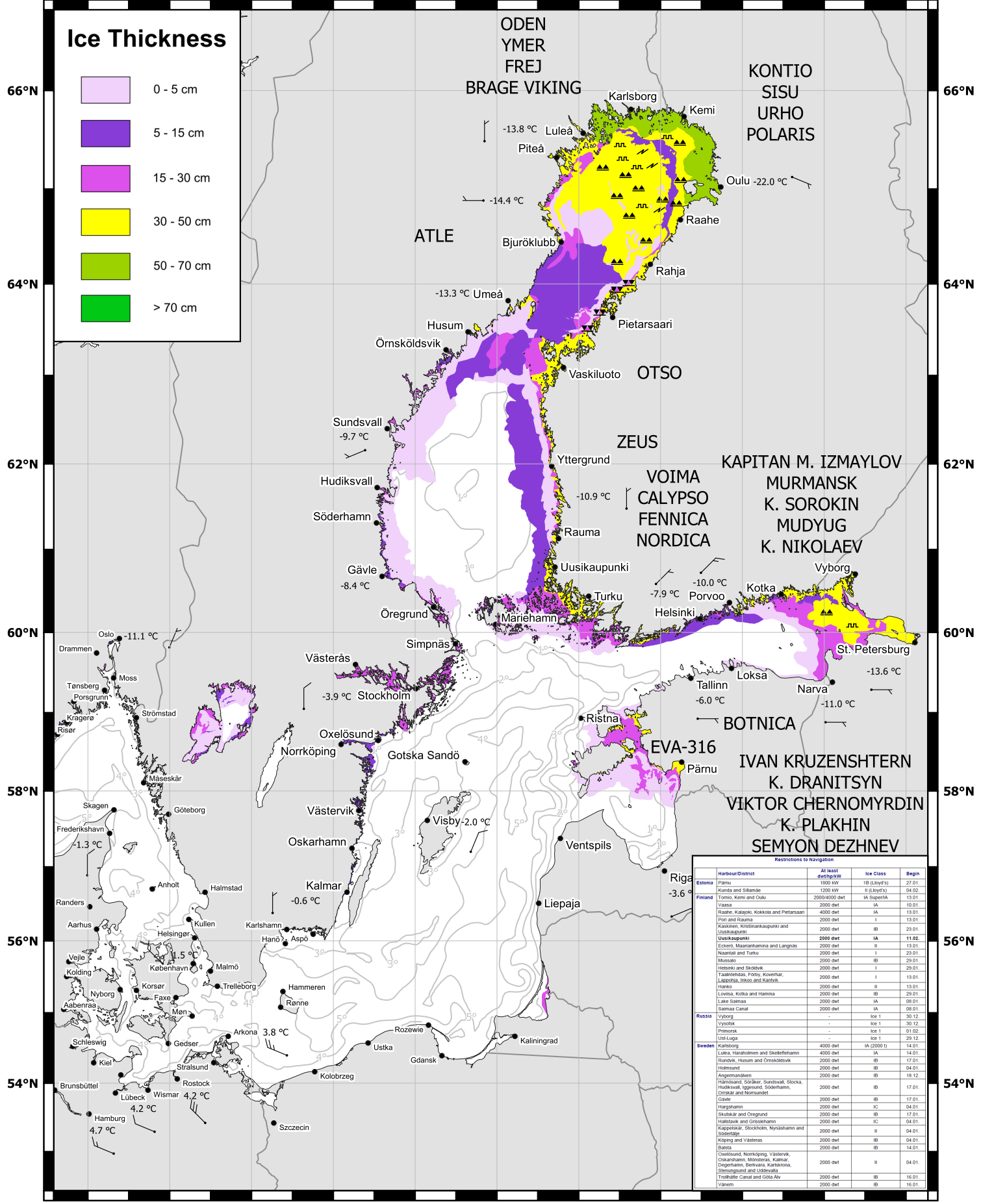
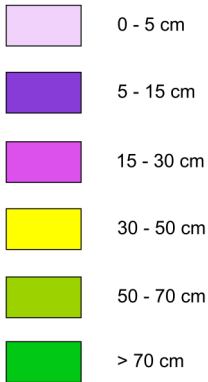
10°E 12°E 14°E 16°E 18°E 20°E 22°E 24°E 26°E 28°E 30°E





10°E 12°E 14°E 16°E 18°E 20°E 22°E 24°E 26°E 28°E 30°E

Ice Thickness



Restrictions to Navigation

Country	Harbour/District	At least depth (m)	Ice Class	Begin
Estonia	Pärnu	1000 kW	IB (Lloyd's)	27.01.
	Kunda and Sillamäe	1200 kW	II (Lloyd's)	04.02.
Finland	Tornio, Kemi and Oulu	2000 dwt	IA SuperIA	13.01.
	Vaasa	2000 dwt	IA	10.01.
	Raahë, Kajakoski, Kokkola and Pietarsaari	4000 dwt	IA	13.01.
	Pori and Rauma	2000 dwt	I	13.01.
	Kaapiainen, Kristinankaupunki and Uusikaupunki	2000 dwt	IB	23.01.
	Uusikaupunki	2000 dwt	IA	11.02.
	Eckerö, Maarianhamina and Langens	2000 dwt	II	13.01.
	Naantali and Turku	2000 dwt	I	23.01.
	Mossala	2000 dwt	IB	23.01.
	Helsinki and Suolaxi	2000 dwt	I	23.01.
Russia	Taaninlehdas, Forty, Kovonar, Lapobla, Ilioz and Kantov	2000 dwt	I	13.01.
	Hanko	2000 dwt	II	13.01.
	Lovisa, Kotka and Hamina	2000 dwt	IB	23.01.
	Läns-Saimaa	2000 dwt	IA	06.01.
	Saimaa Canal	2000 dwt	IA	06.01.
	Vyborg	-	Ice 1	30.12.
	Vysotsk	-	Ice 1	30.12.
	Priozersk	-	Ice 1	01.02.
	Ust-Luga	-	Ice 1	23.12.
	Sweden	Karlsborg	4000 dwt	IA (2000 t)
Luleå, Haslummen and Skelleftehamn		2000 dwt	IA	14.01.
Rundvik, Husum and Örnsköldsvik		2000 dwt	IB	17.01.
Holmsund		2000 dwt	IB	04.01.
Ångermanälven		2000 dwt	IB	18.12.
Hälsjöfors, Solåker, Sundsvall, Stocks, Hudiksvall, Iggesund, Söderhamn, Östasiat and Norrstrand		2000 dwt	IB	17.01.
Gävle		2000 dwt	IB	17.01.
Härjedalen		2000 dwt	IC	04.01.
Luleå and Öregrund		2000 dwt	IB	17.01.
Hallstads and Grönöhamn		2000 dwt	IC	04.01.
Kappelenjär, Stockholm, Nyttälvhamn and Söderåsen	2000 dwt	II	04.01.	
Köping and Västeraås	2000 dwt	IB	04.01.	
Båstad	2000 dwt	IB	14.01.	
Öregrund, Norrköping, Västervik, Oskarhamn, Mönsterås, Kalmar, Degerhamn, Beröarna, Karlensö, Stenungsund and Lidövarv	2000 dwt	II	04.01.	
Trollhätte Canal and Göta Älv	2000 dwt	IB	16.01.	
Vänern	2000 dwt	IB	16.01.	

10°E 12°E 14°E 16°E 18°E 20°E 22°E 24°E 26°E 28°E 30°E