

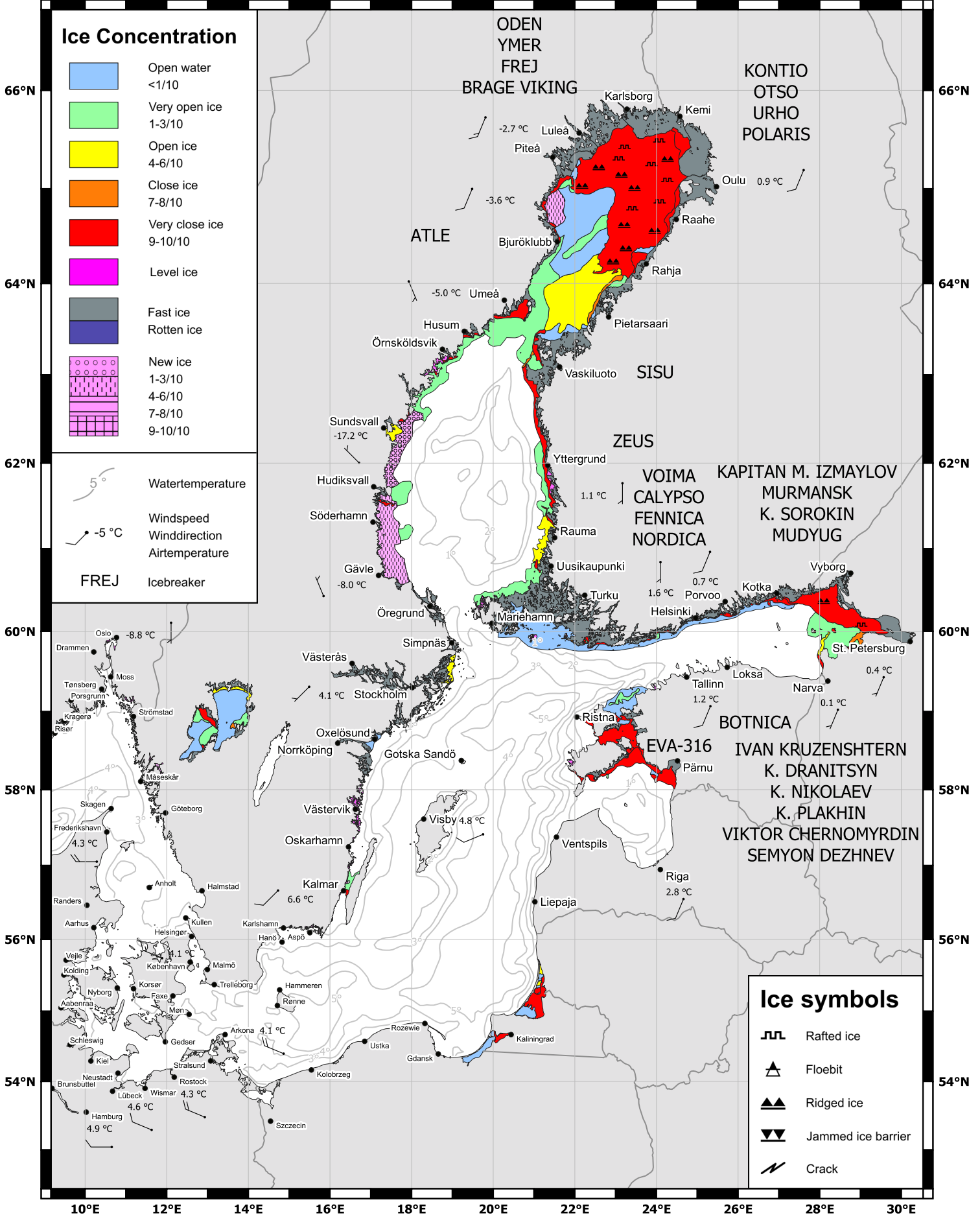


10°E 12°E 14°E 16°E 18°E 20°E 22°E 24°E 26°E 28°E 30°E

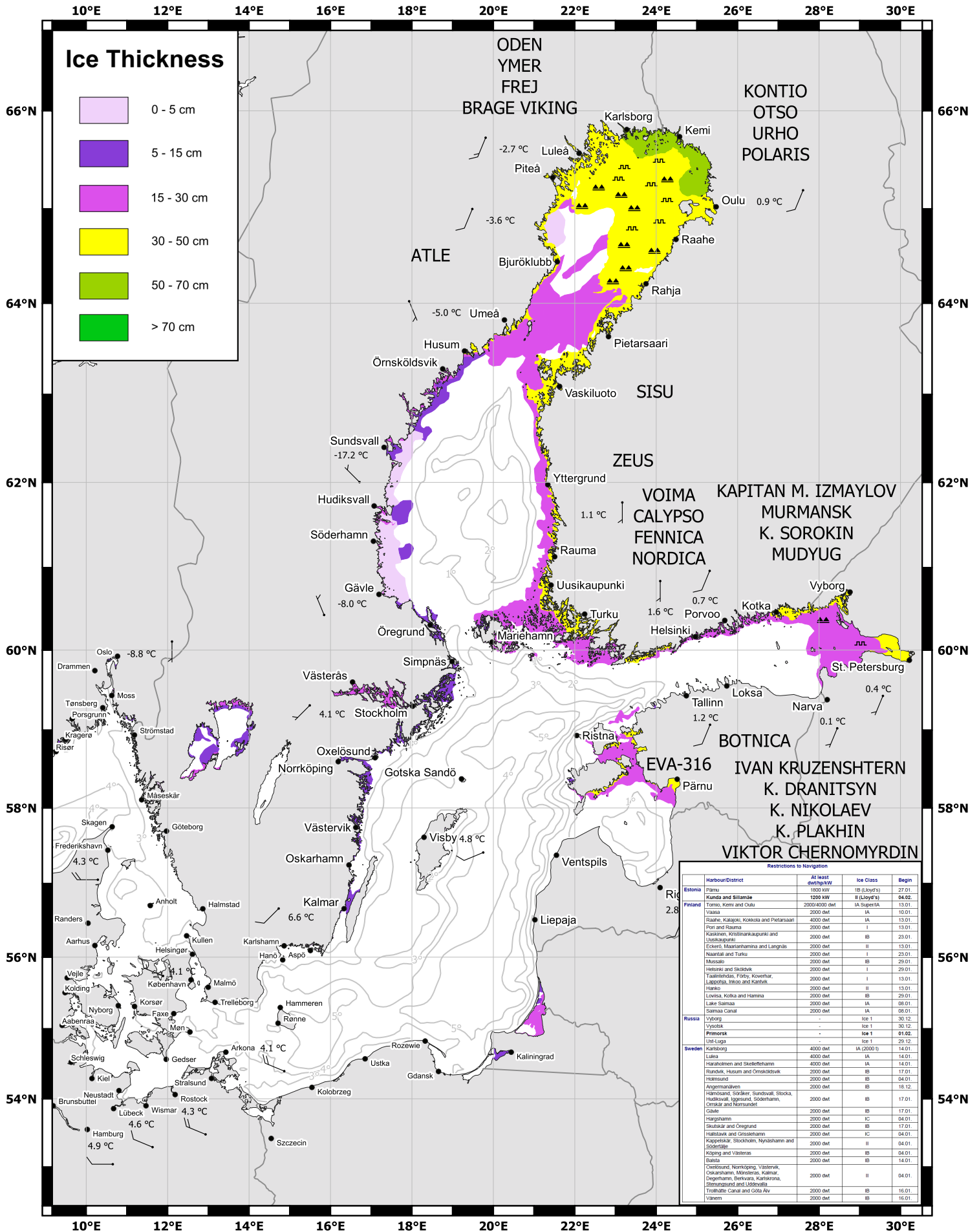
Ice Concentration

- Open water <1/10
- Very open ice 1-3/10
- Open ice 4-6/10
- Close ice 7-8/10
- Very close ice 9-10/10
- Level ice
- Fast ice
- Rotten ice
- New ice 1-3/10, 4-6/10, 7-8/10, 9-10/10

- 5° Wassertemperatur
- 5°C Windspeed, Winddirection, Airtemperatur
- FREJ Icebreaker



- Ice symbols**
- ⌋⌋ Rafted ice
 - ▲ Floe bit
 - ▲▲ Ridged ice
 - ▼▼ Jammed ice barrier
 - ⚡ Crack



Restrictions to Navigation

Harbour/District	At least dwt/ship/kw	Ice Class	Begin
Estonia			
Pärnu	1800 kw	1B (Lloyd's)	27.01.
Finland			
Kunda and Sillamäe	1200 kw	II (Lloyd's)	04.02.
Tornio, Kemi and Oulu	2000/4000 dwt	IA Super/A	13.01.
Vaasa	2000 dwt	IA	10.01.
Raahe, Kallakivi, Kokkola and Pietarsaari	4000 dwt	IA	13.01.
Port and Rauma	2000 dwt	I	13.01.
Kärsäinen, Koskenkylänpää and Uusikaupunki	2000 dwt	IB	23.01.
Eckerö, Maarianhamina and Langas	2000 dwt	II	13.01.
Nuusjärvi and Turku	2000 dwt	I	23.01.
Mussalo	2000 dwt	IB	29.01.
Helsinki and Skokholm	2000 dwt	I	29.01.
Tasikallio, Föky, Kovero and Lapohja, Insoo and Karby	2000 dwt	I	13.01.
Hanko	2000 dwt	II	13.01.
Lovisa, Kotka and Hamina	2000 dwt	IB	29.01.
Lake-Saimaa	2000 dwt	IA	08.01.
Saimaa Canal	2000 dwt	IA	08.01.
Russia			
Vyborg	-	Ice 1	30.12.
Lyubsk	-	Ice 1	30.12.
Primorsk	-	Ice 1	01.02.
Ust-Luga	-	Ice 1	29.12.
Sweden			
Karlsborg	4000 dwt	IA (2000 t)	14.01.
Luleå	4000 dwt	IA	14.01.
Haraholmen and Skelleftehamn	4000 dwt	IA	14.01.
Rundvik, Husum and Örnsköldsvik	2000 dwt	IB	17.01.
Härnösand	2000 dwt	IB	04.01.
Ångermanålviken	2000 dwt	IB	18.12.
Härnösand, Söråker, Sundsvall, Stokka, Hedström, Ålgården, Söderhamn, Önskar and Narsundet	2000 dwt	IB	17.01.
Oslo	2000 dwt	IB	17.01.
Härnösand	2000 dwt	IB	04.01.
Skutskar and Öregrund	2000 dwt	IB	17.01.
Hallövik and Grönskärhamn	2000 dwt	IC	04.01.
Kopparvik, Sköckholm, Nyssåhamn and Söderålviken	2000 dwt	II	04.01.
Köping and Västerås	2000 dwt	IB	04.01.
Bjelta	2000 dwt	IB	14.01.
Örnsköldsvik, Norrköping, Västerås, Oskarshamn, Marstrand, Kåmar, Degethamn, Benävis, Karlskrona, Strömsholm and Uppsalva	2000 dwt	II	04.01.
Trollhätte Canal and Göta Älv	2000 dwt	IB	16.01.
Väneren	2000 dwt	IB	16.01.