



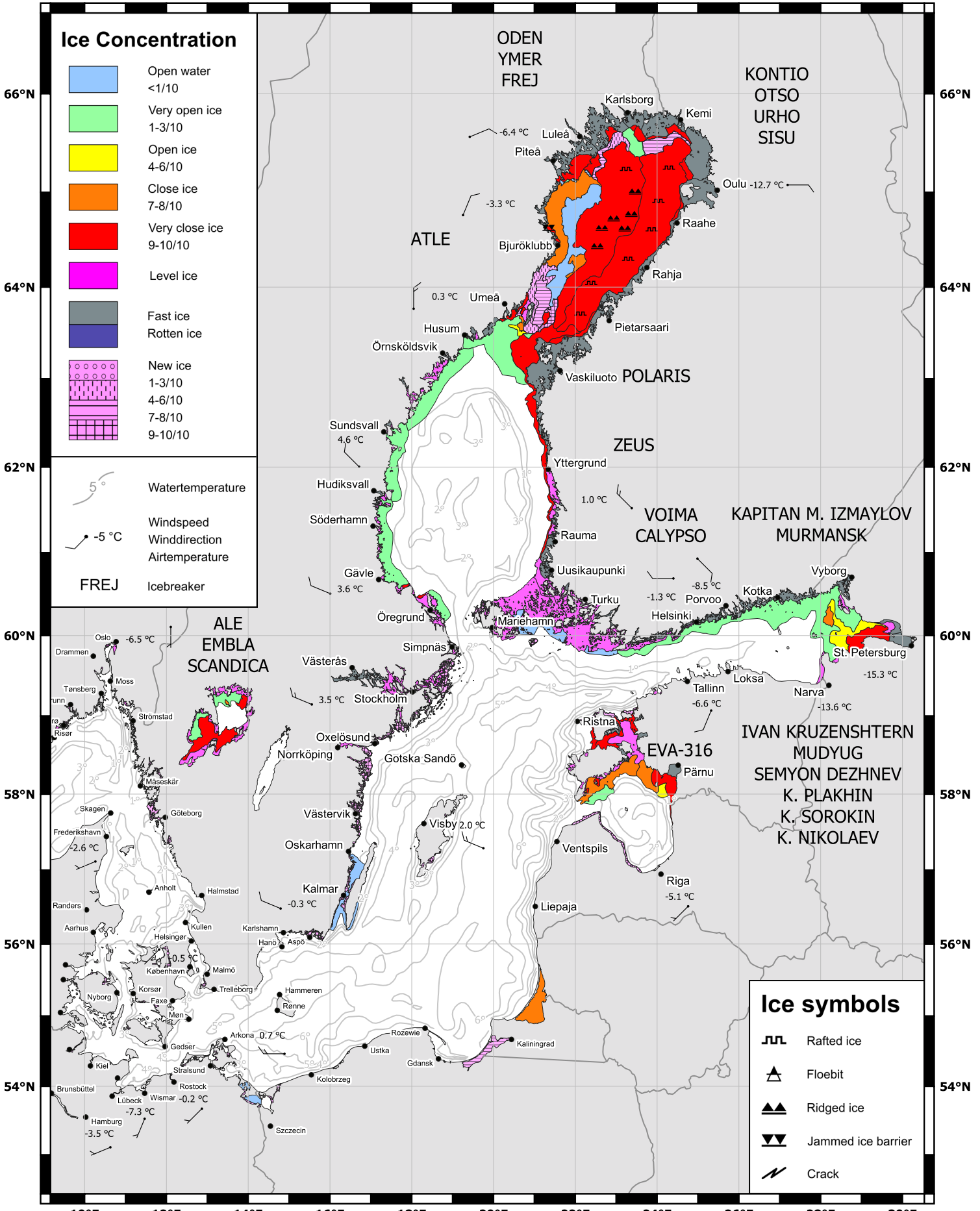
10°E 12°E 14°E 16°E 18°E 20°E 22°E 24°E 26°E 28°E 30°E

Ice Concentration

- Open water <1/10
- Very open ice 1-3/10
- Open ice 4-6/10
- Close ice 7-8/10
- Very close ice 9-10/10
- Level ice
- Fast ice
- Rotten ice
- New ice
 - 1-3/10
 - 4-6/10
 - 7-8/10
 - 9-10/10

5° Wassertemperatur
 -5 °C Windspeed
 Winddirection
 Airtemperatur

FREJ Icebreaker



Ice symbols

- ⋈ Rafted ice
- ▲ Floe bit
- ▲▲ Ridged ice
- ▼▼ Jammed ice barrier
- ⚡ Crack

10°E 12°E 14°E 16°E 18°E 20°E 22°E 24°E 26°E 28°E 30°E

