



10°E 12°E 14°E 16°E 18°E 20°E 22°E 24°E 26°E 28°E 30°E

Ice Concentration

- Open water <1/10
- Very open ice 1-3/10
- Open ice 4-6/10
- Close ice 7-8/10
- Very close ice 9-10/10
- Level ice
- Fast ice
- Rotten ice
- New ice 1-3/10
- New ice 4-6/10
- New ice 7-8/10
- New ice 9-10/10

- 5 °C Watertemperature
- 5 °C Windspeed
- Winddirection
- Airtemperature
- FREJ Icebreaker

66°N

64°N

62°N

60°N

58°N

56°N

54°N

66°N

64°N

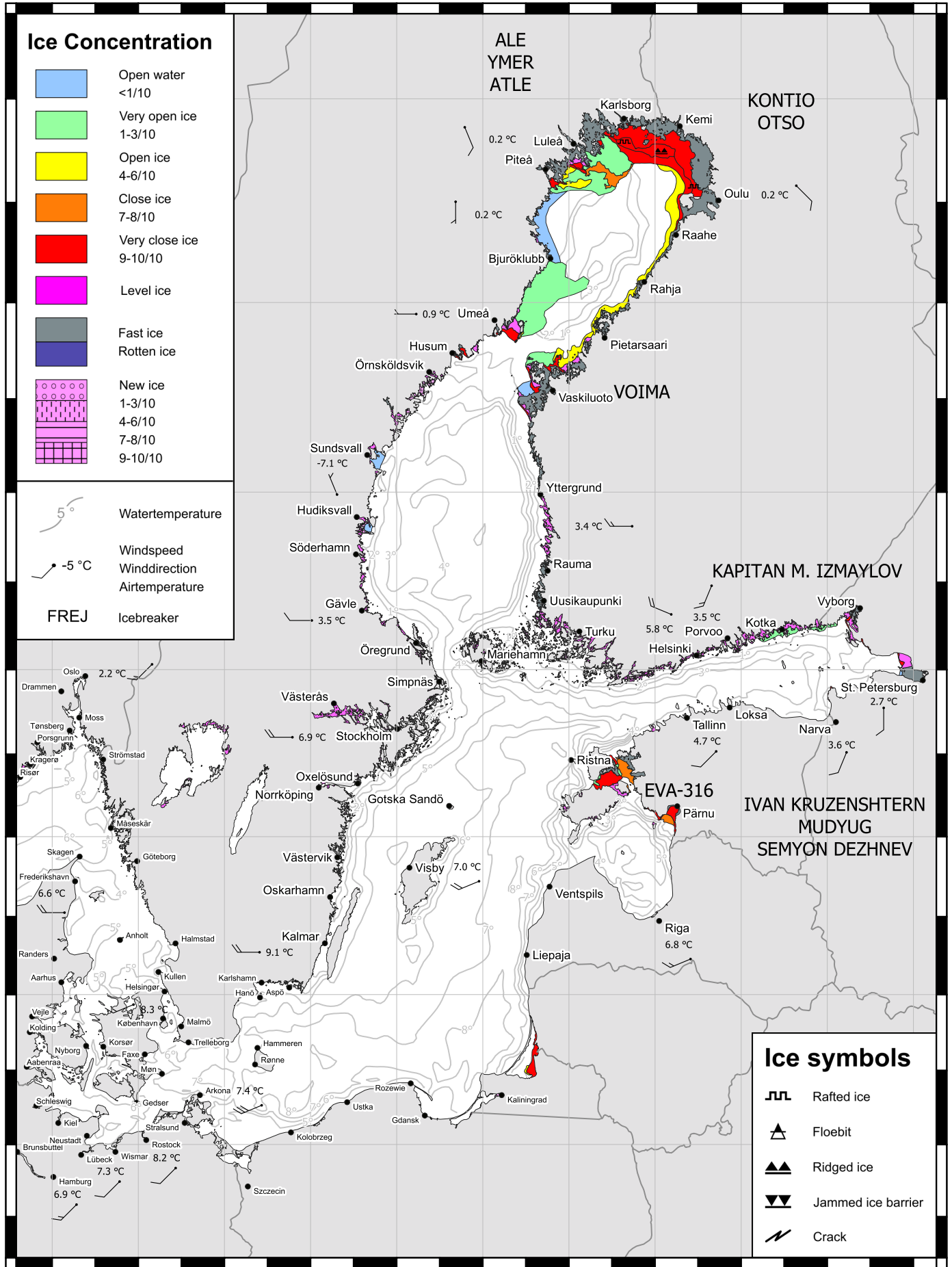
62°N

60°N

58°N

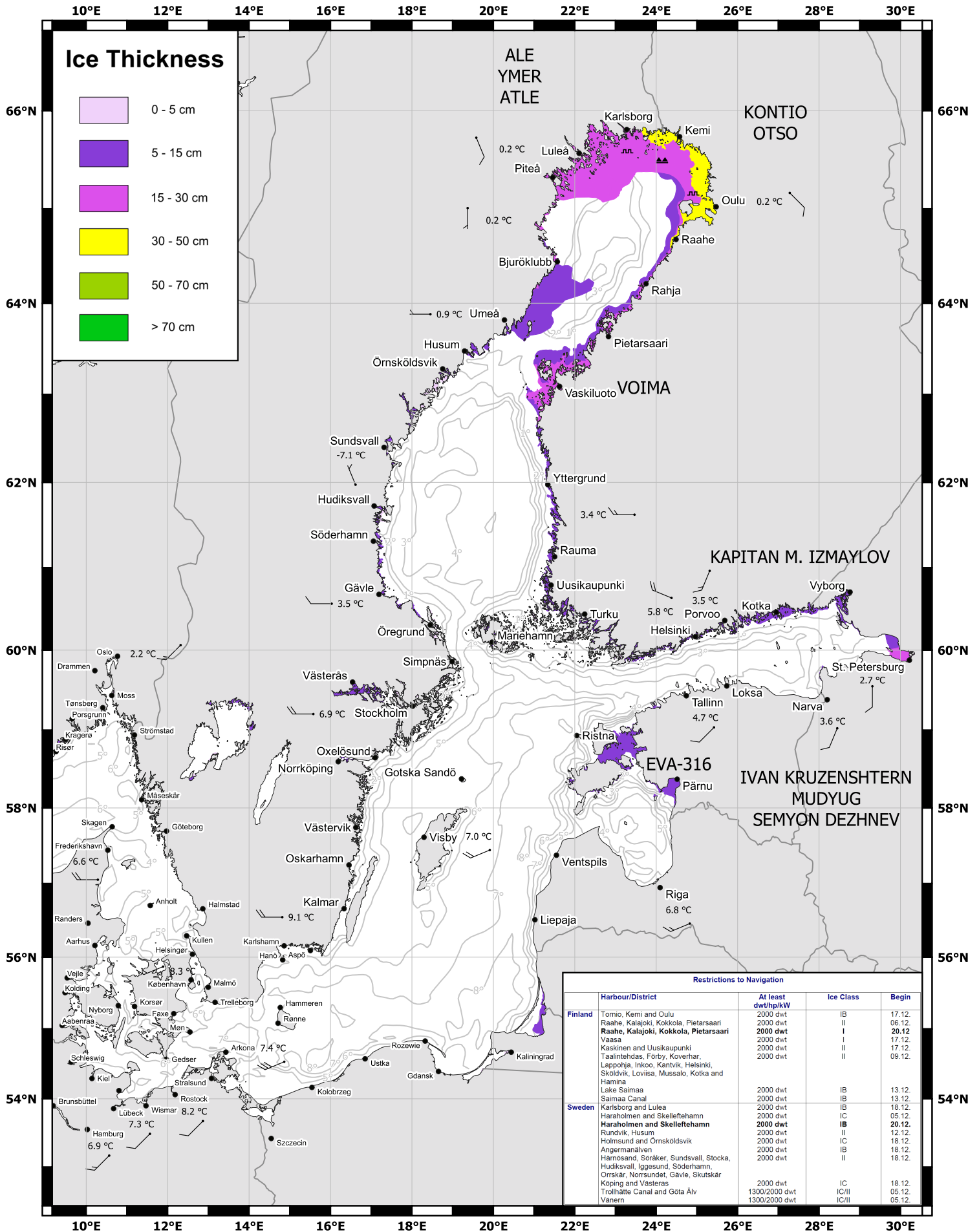
56°N

54°N



- Ice symbols**
- Rafted ice
 - Floe bit
 - Ridged ice
 - Jammed ice barrier
 - Crack

10°E 12°E 14°E 16°E 18°E 20°E 22°E 24°E 26°E 28°E 30°E



Ice Thickness

- 0 - 5 cm
- 5 - 15 cm
- 15 - 30 cm
- 30 - 50 cm
- 50 - 70 cm
- > 70 cm

Restrictions to Navigation				
	Harbour/District	At least dwt/tp/kW	Ice Class	Begin
Finland	Tornio, Kemi and Oulu	2000 dwt	IB	17.12.
	Raahe, Kalajoki, Kokkola, Pietarsaari	2000 dwt	II	06.12.
	Raahe, Kalajoki, Kokkola, Pietarsaari	2000 dwt	I	20.12.
	Vaasa	2000 dwt	I	17.12.
	Kaskinen and Uusikaupunki	2000 dwt	II	17.12.
	Taalintehdas, Forby, Koverhar,	2000 dwt	II	09.12.
	Lappohja, Inkoo, Kantvik, Helsinki,	2000 dwt		
	Sköldvik, Loviisa, Mussalo, Kotka and			
	Hamina			
	Lake Saimaa	2000 dwt	IB	13.12.
Saimaa Canal	2000 dwt	IB	13.12.	
Sweden	Karlsborg and Luleå	2000 dwt	IB	18.12.
	Haraholmen and Skelleftehamn	2000 dwt	IC	05.12.
	Haraholmen and Skelleftehamn	2000 dwt	IB	20.12.
	Rundvik, Husum	2000 dwt	II	12.12.
	Holmsund and Örnsköldsvik	2000 dwt	IC	18.12.
	Angermanälven	2000 dwt	IB	18.12.
	Härnösand, Soråker, Sundsvall, Stocka,	2000 dwt	II	18.12.
	Hudiksvall, Iggesund, Söderhamn,			
	Örnskar, Norrsundet, Gävle, Skutskar			
	Köping and Västerås	2000 dwt	IC	18.12.
	Köping and Västerås	1300/2000 dwt	IC/II	05.12.
	Trollhätte Canal and Gota Älv	1300/2000 dwt	IC/II	05.12.
Vänern				