



10°E 12°E 14°E 16°E 18°E 20°E 22°E 24°E 26°E 28°E 30°E

Ice Concentration

- Open water <1/10
- Very open ice 1-3/10
- Open ice 4-6/10
- Close ice 7-8/10
- Very close ice 9-10/10
- Level ice
- Fast ice
- Rotten ice
- New ice 1-3/10
- New ice 4-6/10
- New ice 7-8/10
- New ice 9-10/10

- Wassertemperatur
- Windspeed
- Winddirection
- Airtemperatur
- Icebreaker

66°N

64°N

62°N

60°N

58°N

56°N

54°N

66°N

64°N

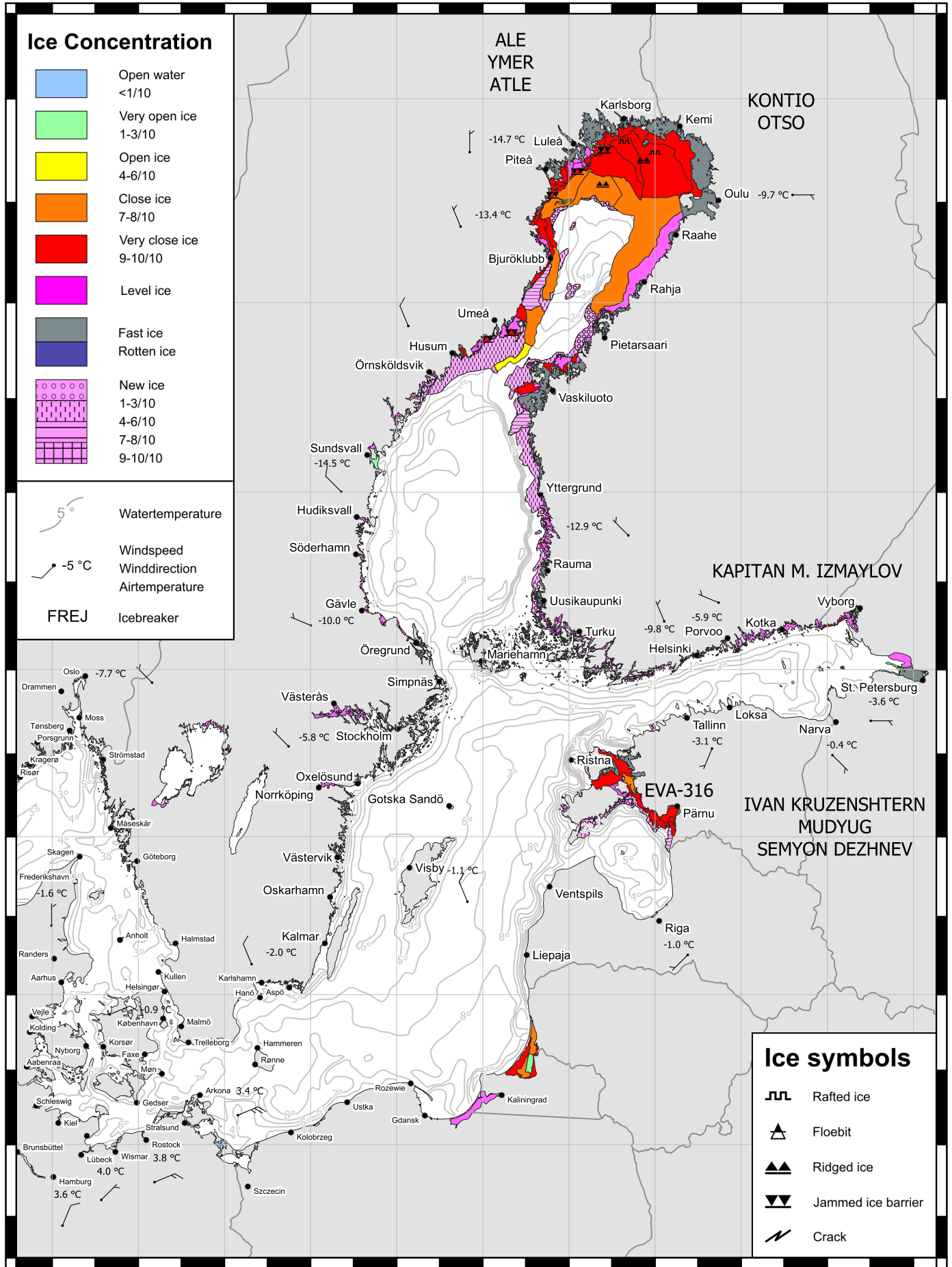
62°N

60°N

58°N

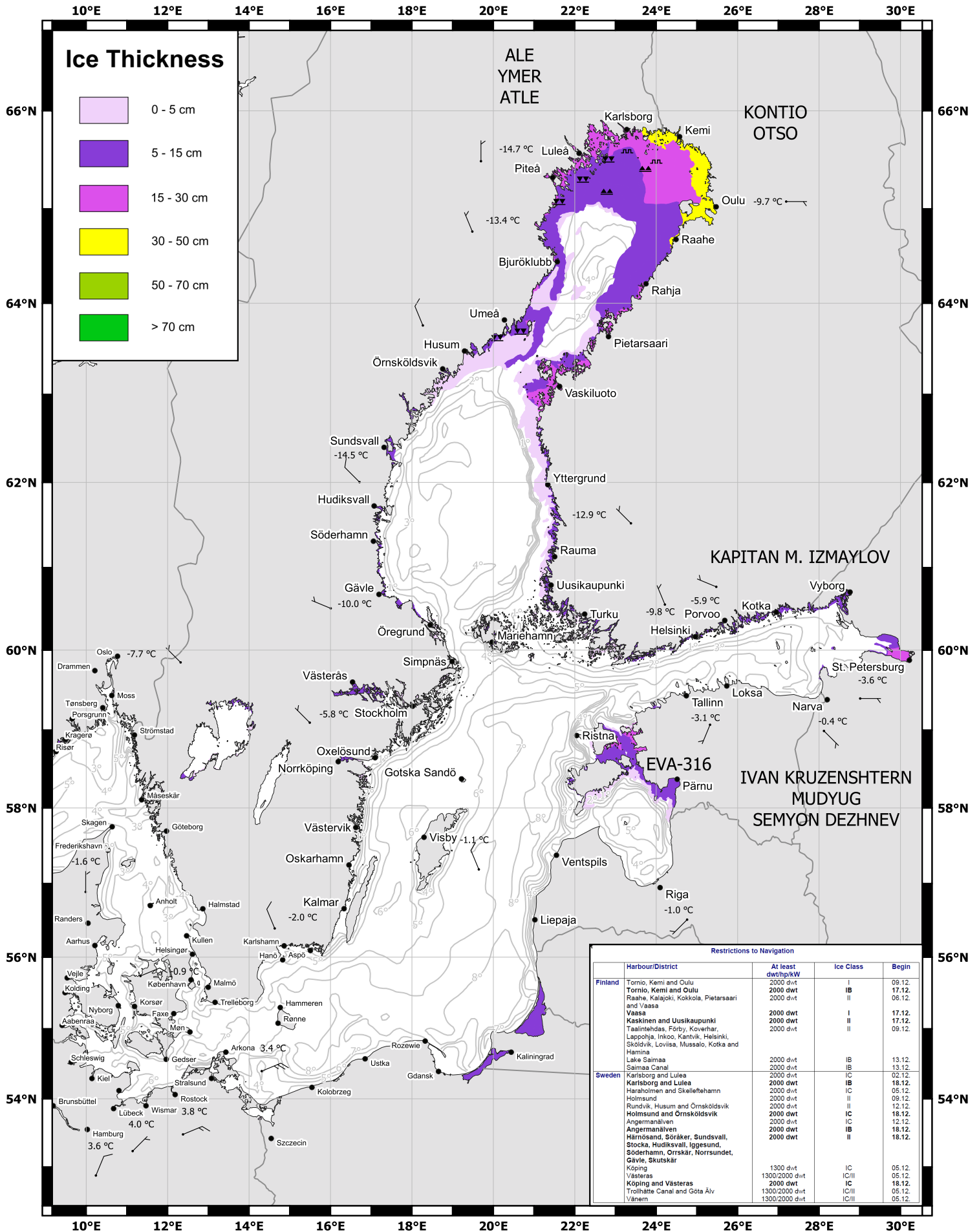
56°N

54°N



- Ice symbols**
- Rafted ice
 - Floe bit
 - Ridged ice
 - Jammed ice barrier
 - Crack

10°E 12°E 14°E 16°E 18°E 20°E 22°E 24°E 26°E 28°E 30°E



Restrictions to Navigation				
Harbour/District	At least dwt/kW	Ice Class	Begin	
Finland	Tornio, Kemi and Oulu	2000 dwt	I	09.12.
	Tornio, Kemi and Oulu	2000 dwt	IB	17.12.
	Raahé, Kalajoki, Kokkola, Pietarsaari and Vaasa	2000 dwt	II	06.12.
	Vaasa	2000 dwt	I	17.12.
	Kaskinen and Uusikaupunki	2000 dwt	II	17.12.
	Taalmtehdas, Förby, Koverhar, Leppöja, Inkoo, Kantvik, Helsinki, Sköldvik, Loviisa, Mussalo, Kotka and Hamina	2000 dwt	II	09.12.
	Lake Saimaa	2000 dwt	IB	13.12.
	Saimaa Canal	2000 dwt	IB	13.12.
	Karlsborg and Luleå	2000 dwt	IC	02.12.
	Karlsborg and Luleå	2000 dwt	IB	18.12.
Sweden	Haraholmen and Skelleftehamn	2000 dwt	IC	05.12.
	Hölsund	2000 dwt	II	09.12.
	Rundvik, Husum and Örnsköldsvik	2000 dwt	II	12.12.
	Hölsund and Örnsköldsvik	2000 dwt	IC	18.12.
	Angermanälven	2000 dwt	IC	12.12.
	Angermanälven	2000 dwt	IB	18.12.
	Härnösand, Söråker, Sundsvall, Stocka, Hudiksvall, Iggesund, Söderhamn, Örnsköldsvik, Gävle, Skutskär	2000 dwt	II	18.12.
	Köping	1300 dwt	IC	05.12.
	Västeraås	1300/2000 dwt	IC/II	05.12.
	Köping and Västeraås	2000 dwt	IC	18.12.
	Trollhättan Canal and Göta Älv	1300/2000 dwt	IC/II	05.12.
	Vänern	1300/2000 dwt	IC/II	05.12.