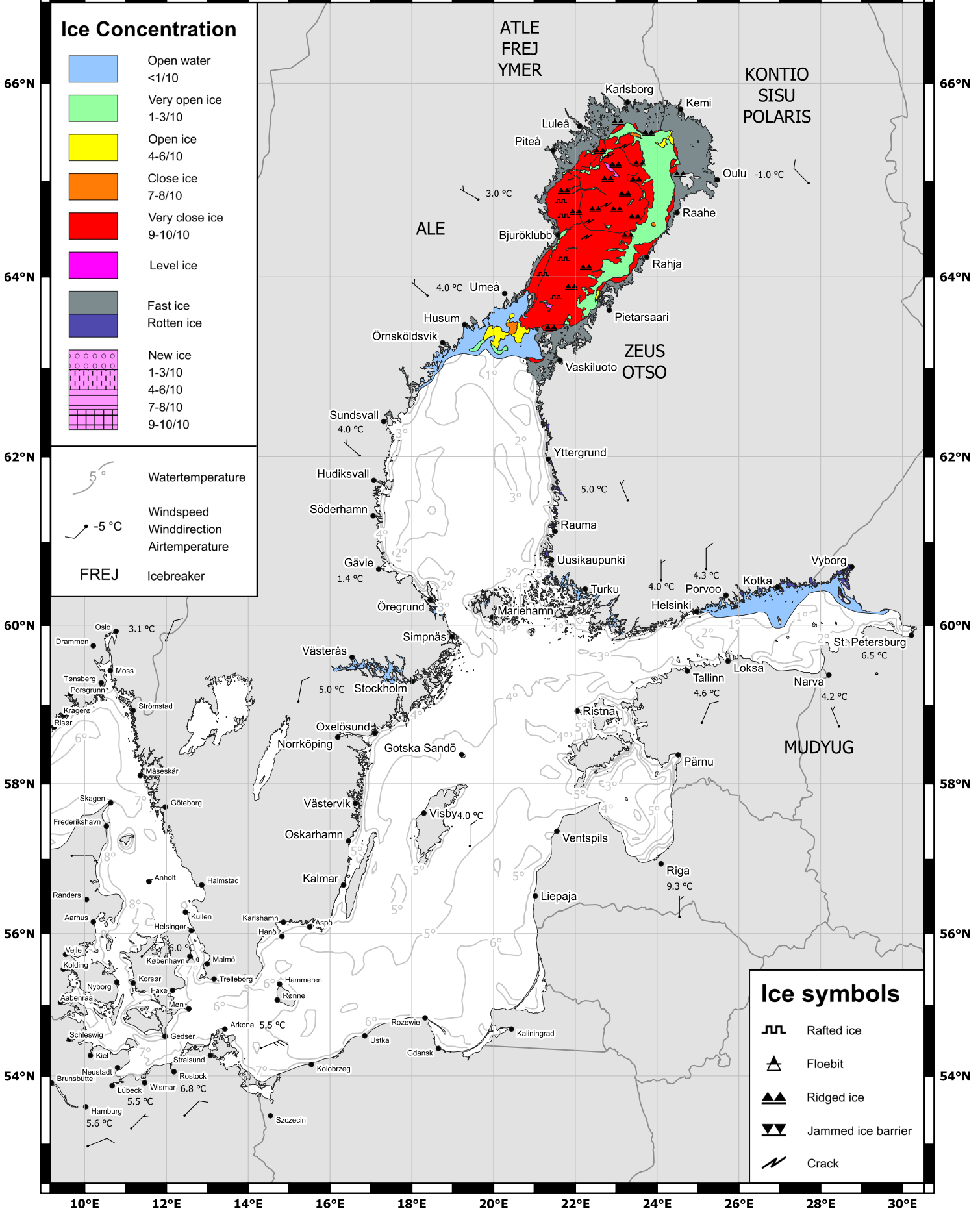
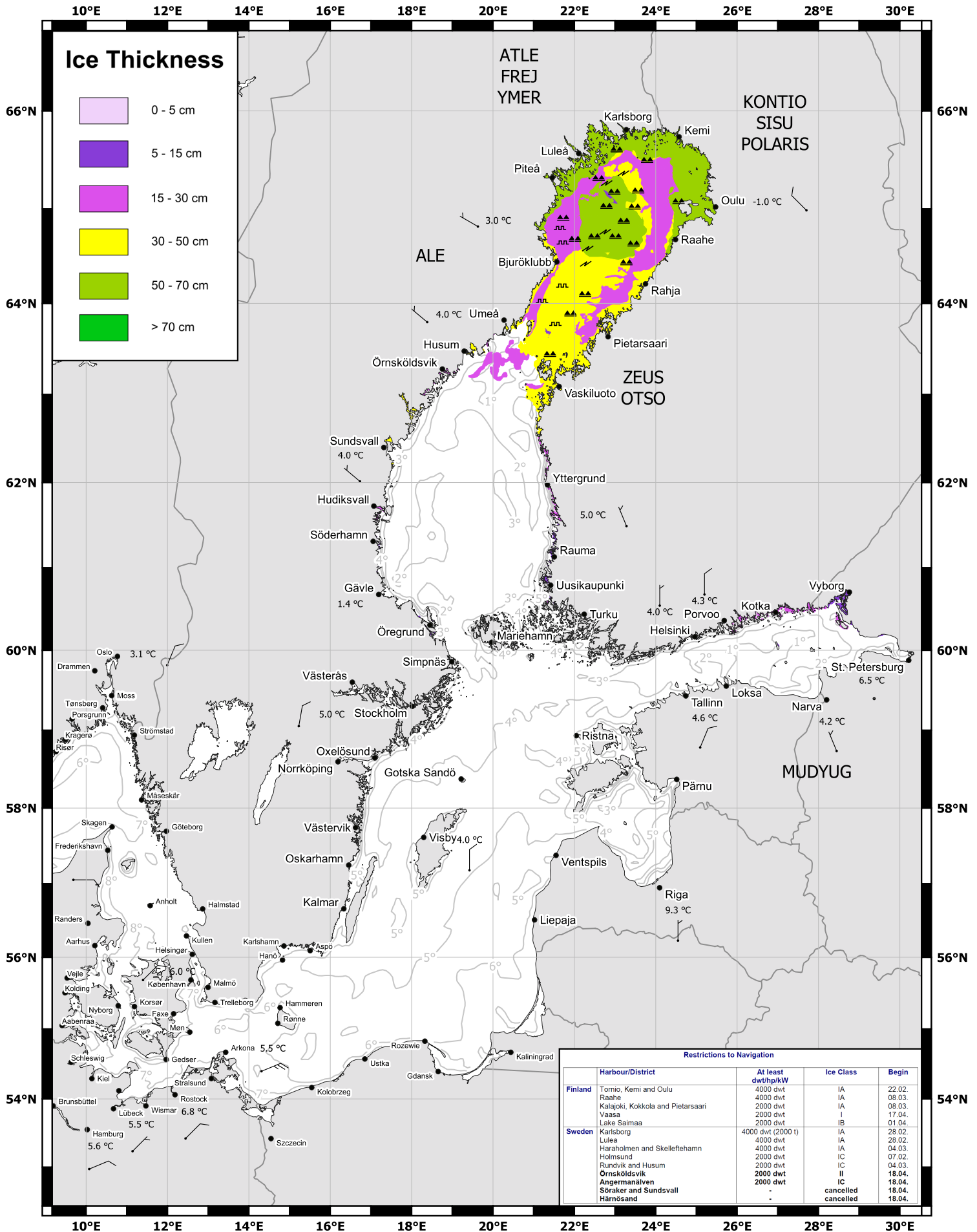




10°E 12°E 14°E 16°E 18°E 20°E 22°E 24°E 26°E 28°E 30°E



10°E 12°E 14°E 16°E 18°E 20°E 22°E 24°E 26°E 28°E 30°E



**Ice Thickness**

- 0 - 5 cm
- 5 - 15 cm
- 15 - 30 cm
- 30 - 50 cm
- 50 - 70 cm
- > 70 cm

**Restrictions to Navigation**

	Harbour/District	At least dwt/hp/kW	Ice Class	Begin
Finland	Tornio, Kemi and Oulu	4000 dwt	IA	22.02.
	Raahe	4000 dwt	IA	08.03.
	Kalajoki, Kokkola and Pietarsaari	2000 dwt	IA	08.03.
	Vaasa	2000 dwt	I	17.04.
	Lake Saimaa	2000 dwt	IB	01.04.
Sweden	Karlsborg	4000 dwt (2000 t)	IA	28.02.
	Luleå	4000 dwt	IA	28.02.
	Haraholmen and Skelleftehamn	4000 dwt	IA	04.03.
	Holmsund	2000 dwt	IC	07.02.
	Rundvik and Husum	2000 dwt	IC	04.03.
	Örnsköldsvik	2000 dwt	II	18.04.
	Angermanälven	2000 dwt	IC	18.04.
	Soråker and Sundsvall	-	cancelled	18.04.
	Härösand	-	cancelled	18.04.