



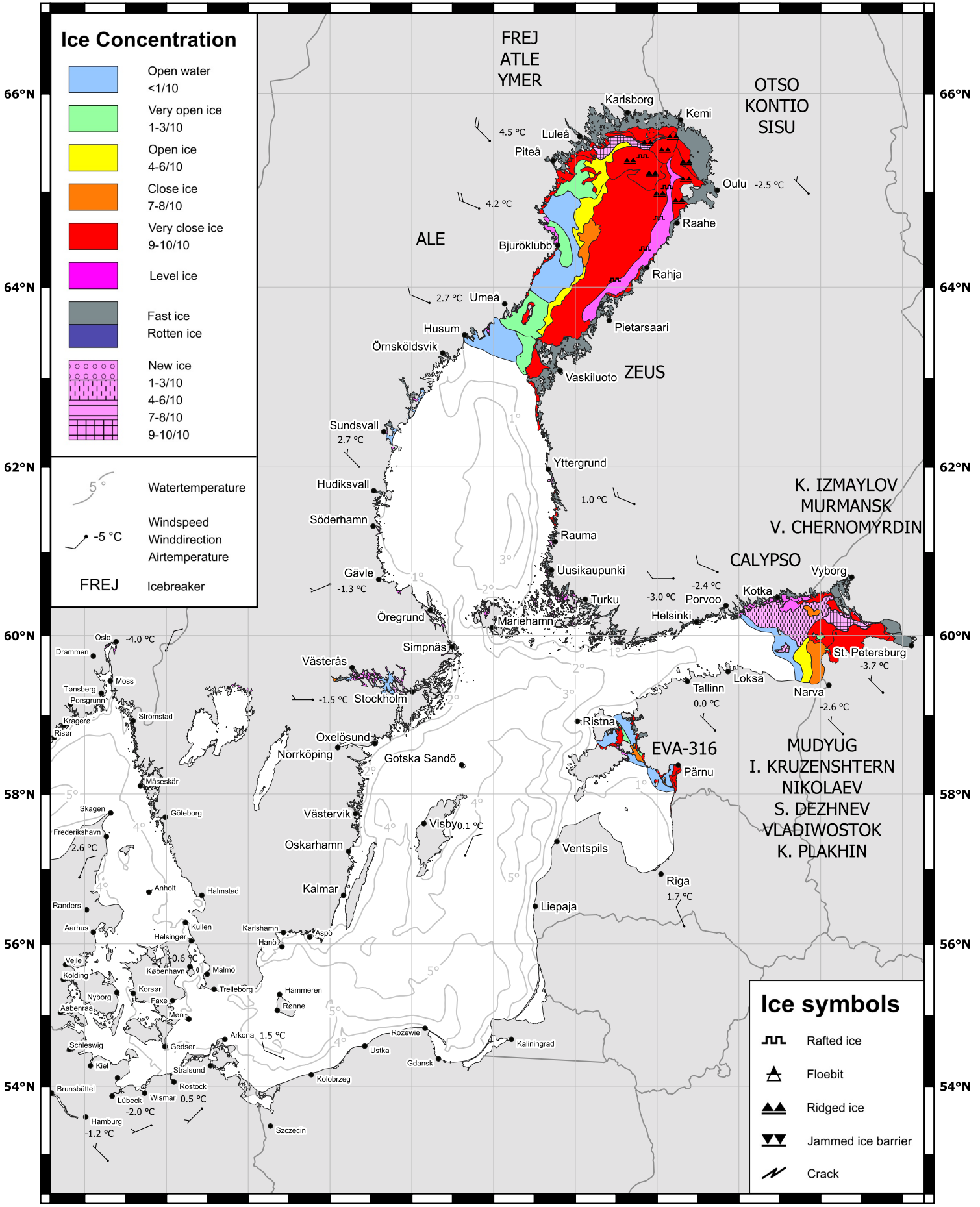
10°E 12°E 14°E 16°E 18°E 20°E 22°E 24°E 26°E 28°E 30°E

Ice Concentration

- Open water <1/10
- Very open ice 1-3/10
- Open ice 4-6/10
- Close ice 7-8/10
- Very close ice 9-10/10
- Level ice
- Fast ice
- Rotten ice
- New ice
 - 1-3/10
 - 4-6/10
 - 7-8/10
 - 9-10/10

5° Watertemperature
-5 °C Windspeed
-5 °C Winddirection
-5 °C Airtemperature

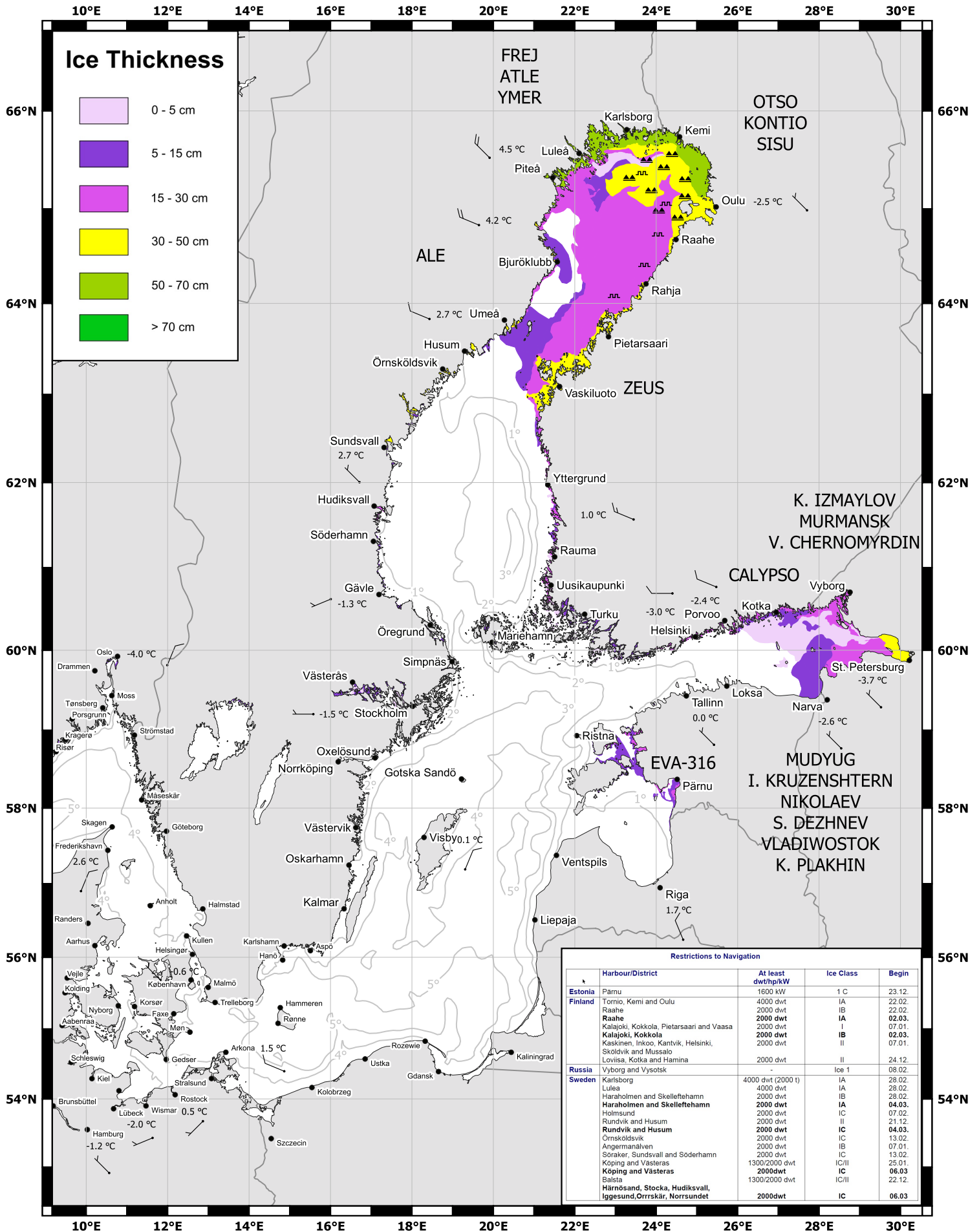
FREJ Icebreaker



Ice symbols

- Rafted ice
- Floebit
- Ridged ice
- Jammed ice barrier
- Crack

10°E 12°E 14°E 16°E 18°E 20°E 22°E 24°E 26°E 28°E 30°E



Ice Thickness

- 0 - 5 cm
- 5 - 15 cm
- 15 - 30 cm
- 30 - 50 cm
- 50 - 70 cm
- > 70 cm

Restrictions to Navigation			
Harbour/District	At least dwt/tkW	Ice Class	Begin
Estonia			
Pärnu	1600 dwt	1 C	23.12.
Finland			
Tornio, Kemi and Oulu	4000 dwt	IA	22.02.
Raahé	2000 dwt	IB	22.02.
Raahé	2000 dwt	IA	02.03.
Kalajoki, Kokkola, Pietarsaari and Vaasa	2000 dwt	I	07.01.
Kalajoki, Kokkola	2000 dwt	IB	02.03.
Kaskmen, Inkoo, Kantvik, Helsinki, Sköldvik and Mussalo	2000 dwt	II	07.01.
Loviisa, Kotka and Hamina	2000 dwt	II	24.12.
Russia			
Vyborg and Vysotsk	-	Ice 1	08.02.
Sweden			
Karlsborg	4000 dwt (2000 t)	IA	28.02.
Luleå	2000 dwt	IA	28.02.
Hararholmen and Skelleftehamn	2000 dwt	IB	28.02.
Hararholmen and Skelleftehamn	2000 dwt	IA	04.03.
Holmsund	2000 dwt	IC	07.01.
Rundvik and Husum	2000 dwt	II	21.12.
Rundvik and Husum	2000 dwt	IC	04.03.
Örnsköldsvik	2000 dwt	IC	13.02.
Ångermanälven	2000 dwt	IB	07.01.
Söråker, Sundsvall and Söderhamn	2000 dwt	IC	13.02.
Köping and Västerås	1300/2000 dwt	IC/II	25.01.
Köping and Västerås	2000dwt	IC	06.03
Bålsta	1300/2000 dwt	IC/II	22.12.
Härnösand, Stocka, Hudiksvall, Iggesund, Orrskär, Norrsundet	2000dwt	IC	06.03