



10°E 12°E 14°E 16°E 18°E 20°E 22°E 24°E 26°E 28°E 30°E

Ice Concentration

- Open water <1/10
- Very open ice 1-3/10
- Open ice 4-6/10
- Close ice 7-8/10
- Very close ice 9-10/10
- Level ice
- Fast ice
- Rotten ice
- New ice 1-3/10
- 4-6/10
- 7-8/10
- 9-10/10

- Wassertemperatur
- Windspeed
- Winddirection
- Airtemperatur
- Icebreaker

66°N

64°N

62°N

60°N

58°N

56°N

54°N

66°N

64°N

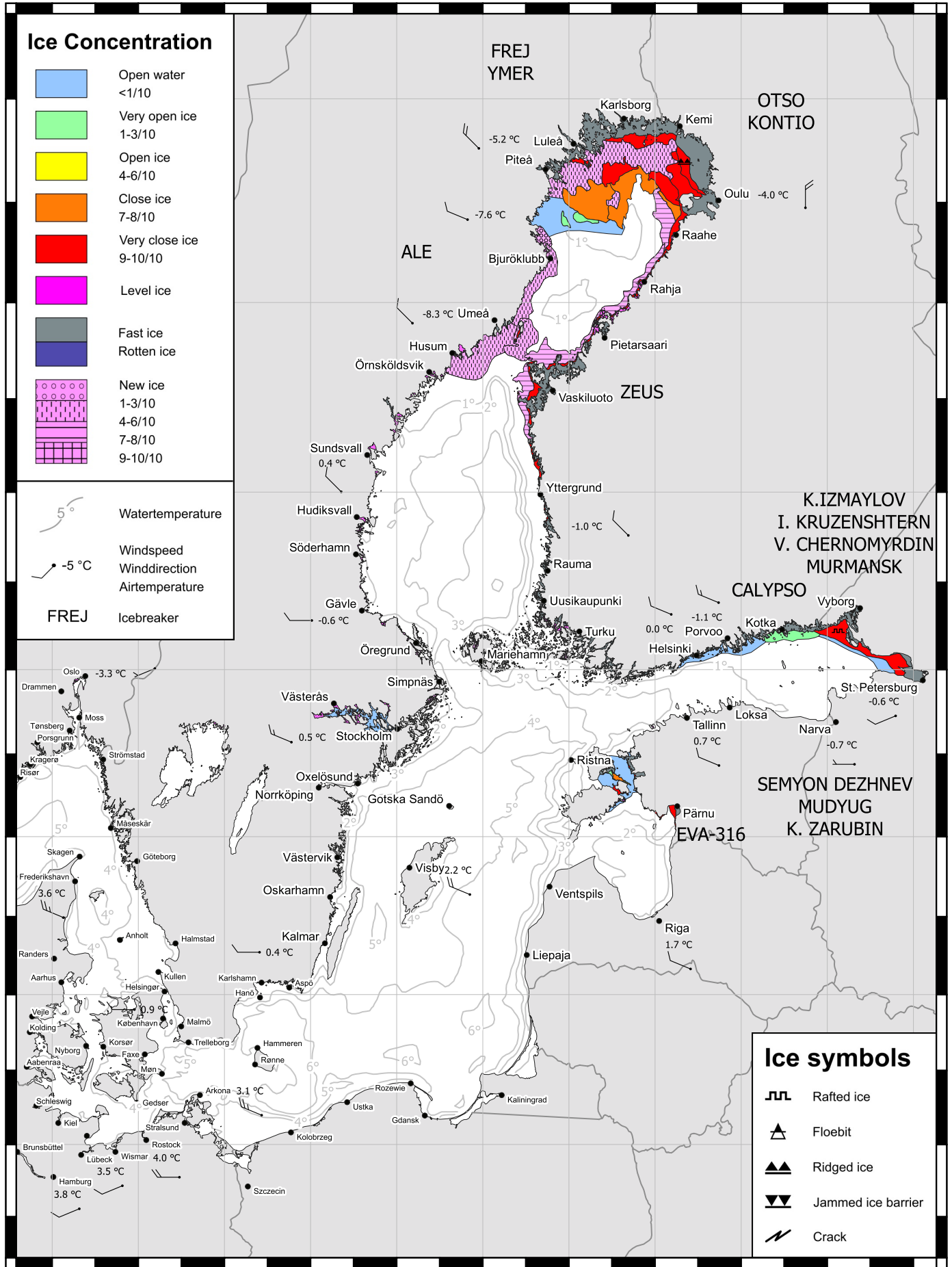
62°N

60°N

58°N

56°N

54°N



- Ice symbols**
- Rafted ice
 - Floe bit
 - Ridged ice
 - Jammed ice barrier
 - Crack

10°E 12°E 14°E 16°E 18°E 20°E 22°E 24°E 26°E 28°E 30°E

