

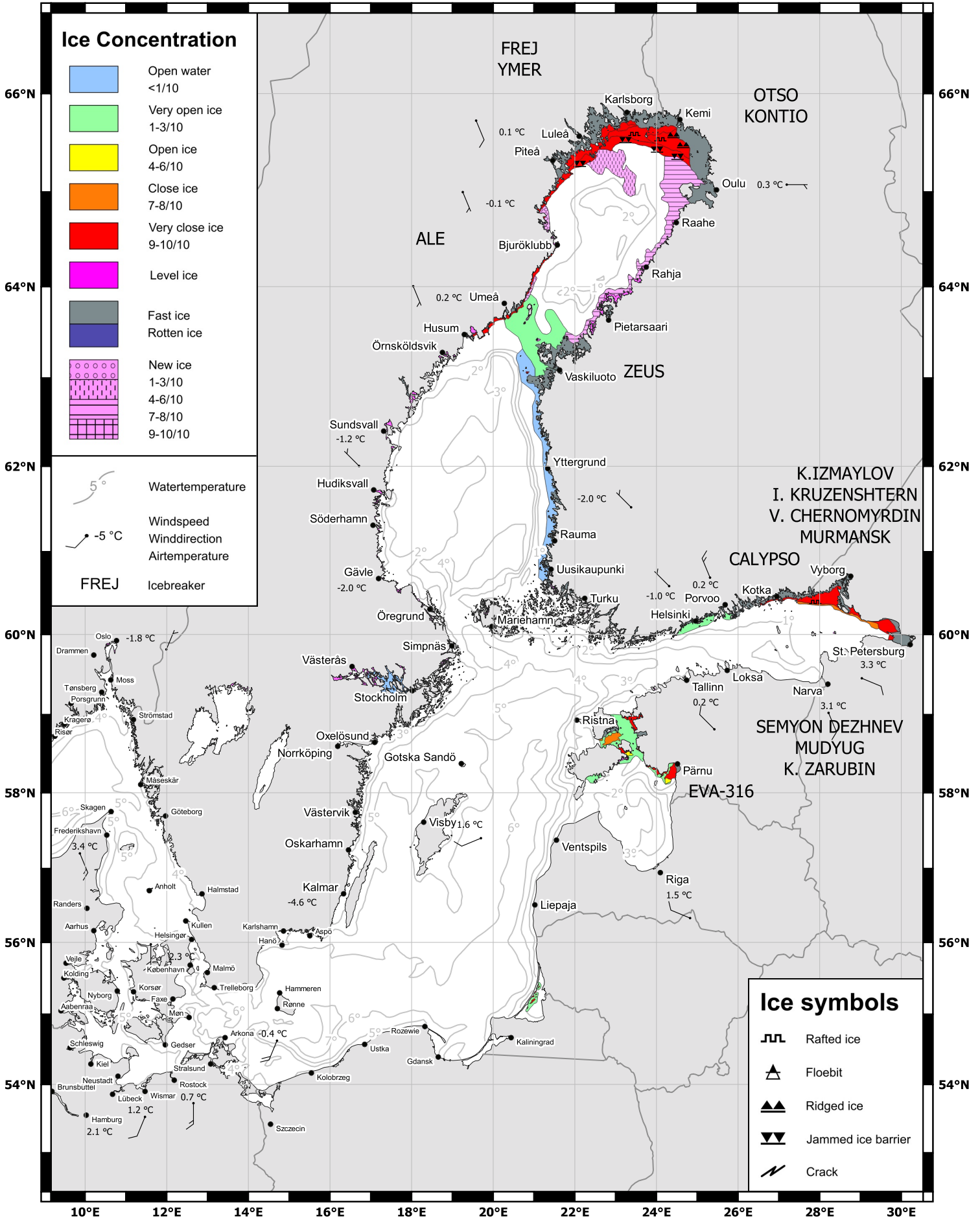


10°E 12°E 14°E 16°E 18°E 20°E 22°E 24°E 26°E 28°E 30°E

Ice Concentration

- Open water <1/10
- Very open ice 1-3/10
- Open ice 4-6/10
- Close ice 7-8/10
- Very close ice 9-10/10
- Level ice
- Fast ice
- Rotten ice
- New ice 1-3/10
- New ice 4-6/10
- New ice 7-8/10
- New ice 9-10/10

- 5° Wassertemperatur
- 5 °C Windspeed
- Winddirection
- Airtemperatur
- FREJ Icebreaker



- Ice symbols**
- Rafted ice
  - Floe bit
  - Ridged ice
  - Jammed ice barrier
  - Crack

10°E 12°E 14°E 16°E 18°E 20°E 22°E 24°E 26°E 28°E 30°E

