

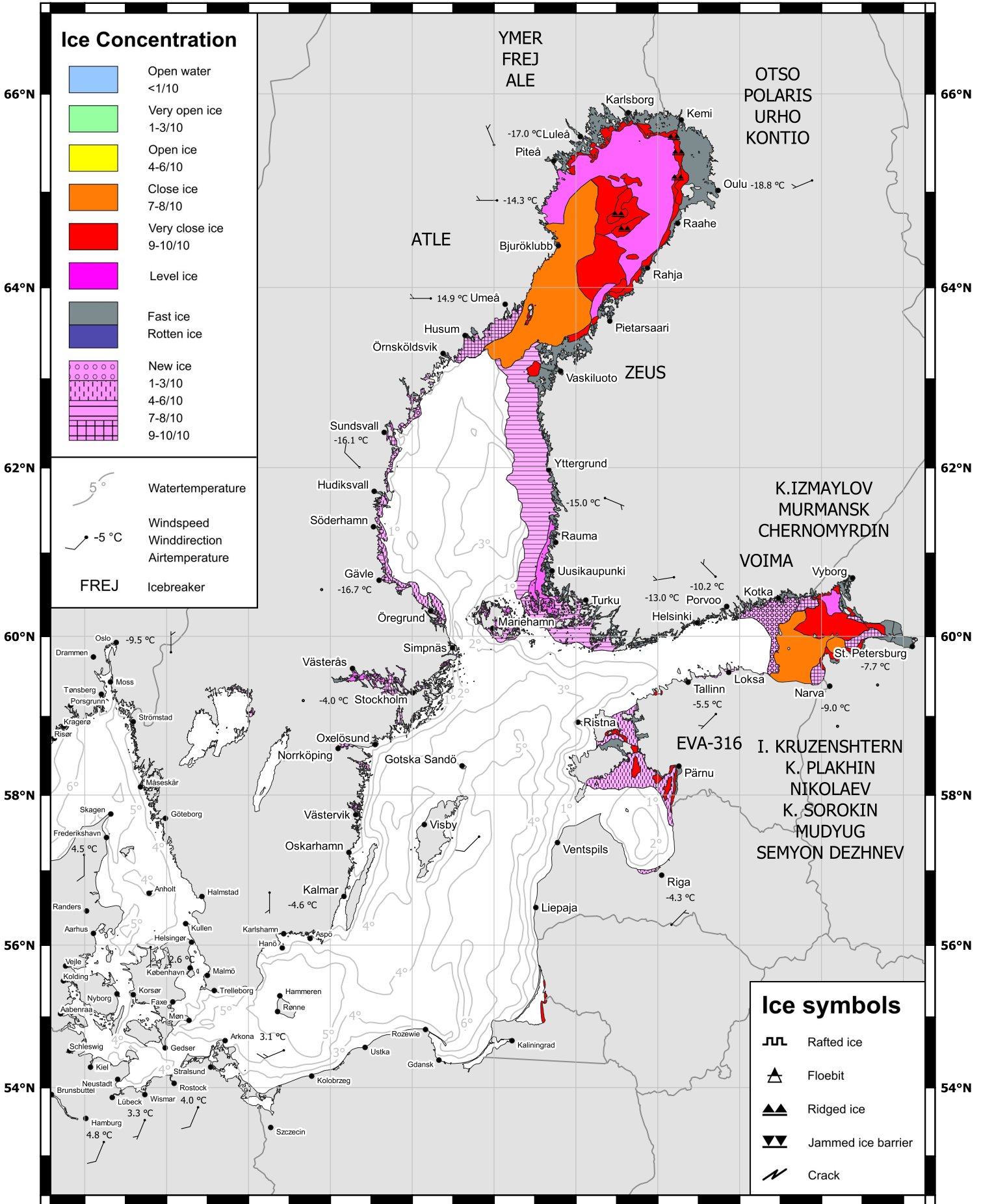


10°E 12°E 14°E 16°E 18°E 20°E 22°E 24°E 26°E 28°E 30°E

Ice Concentration

- Open water <1/10
- Very open ice 1-3/10
- Open ice 4-6/10
- Close ice 7-8/10
- Very close ice 9-10/10
- Level ice
- Fast ice
- Rotten ice
- New ice
 - 1-3/10
 - 4-6/10
 - 7-8/10
 - 9-10/10

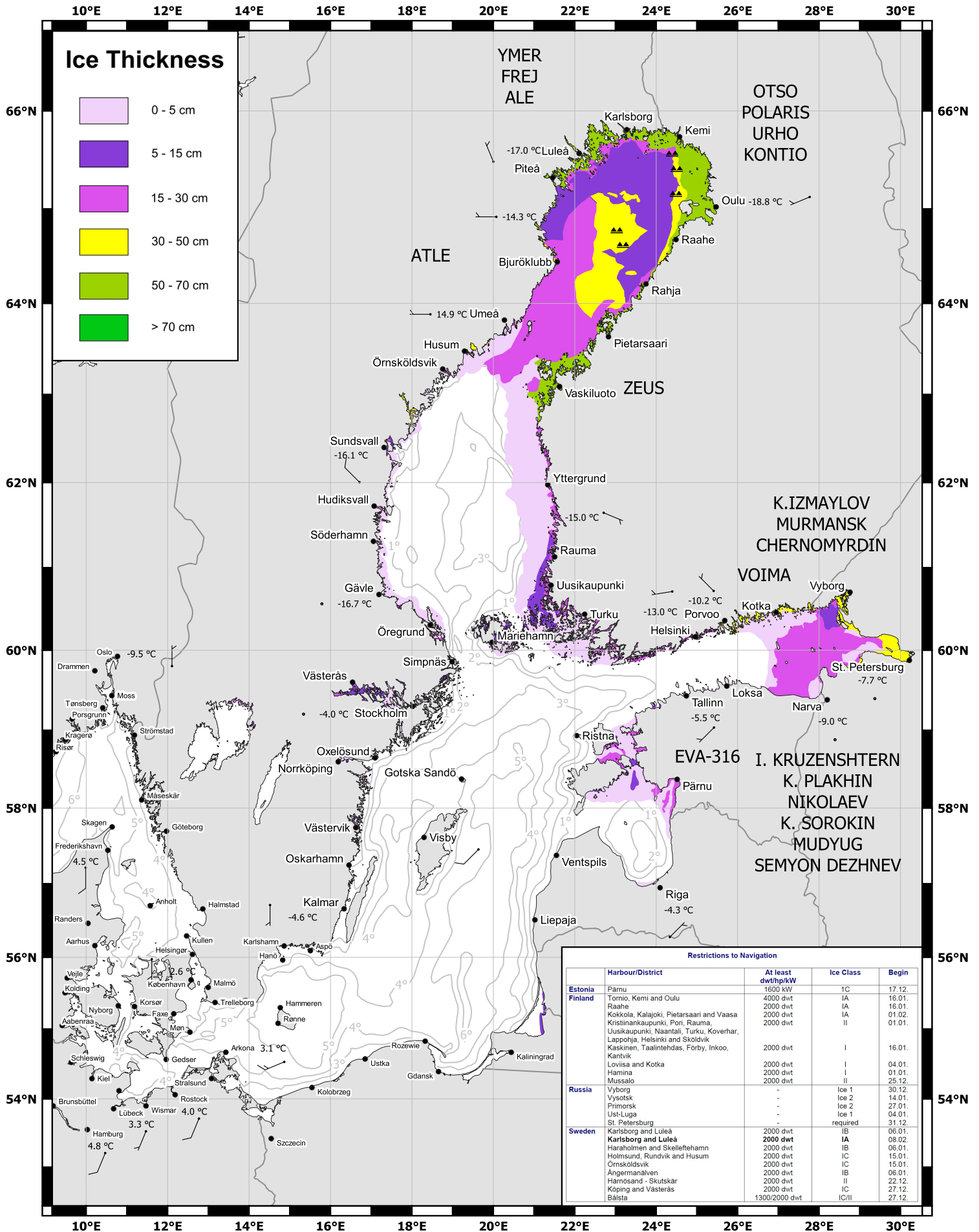
5° Watertemperature
 -5 °C Windspeed
 Winddirection
 Airtemperature
 FREJ Icebreaker



Ice symbols

- Rafted ice
- Floebit
- Ridged ice
- Jammed ice barrier
- Crack

10°E 12°E 14°E 16°E 18°E 20°E 22°E 24°E 26°E 28°E 30°E



Ice Thickness

- 0 - 5 cm
- 5 - 15 cm
- 15 - 30 cm
- 30 - 50 cm
- 50 - 70 cm
- > 70 cm

Restrictions to Navigation

Harbour/District	At least dwt/tpl/kW	Ice Class	Begin
Estonia			
Pärnu	1600 dwt	1C	17.12
Finland			
Tornio, Kemi and Oulu	4000 dwt	IA	16.01
Raahе	2000 dwt	IA	16.01
Kokkola, Kalajoki, Pietarsaari and Vaasa	2000 dwt	IA	01.02
Krisinankapunki, Pori, Rauma, Uusikaupunki, Naantali, Turku, Koverhar, Lappohja, Helsinki and Skoldvik	2000 dwt	II	01.01
Kaskinen, Taalintehdas, Förby, Inkoо, Kantvik	2000 dwt	I	16.01
Lovisa and Kotka	2000 dwt	I	04.01
Hamina	2000 dwt	I	01.01
Mussalo	2000 dwt	II	25.12
Russia			
Vyborg	-	Ice 1	30.12
Vysotsk	-	Ice 2	14.01
Primorsk	-	Ice 2	27.01
Ust-Luga	-	Ice 1	04.01
St. Petersburg	-	required	31.12
Sweden			
Karlsborg and Luleå	2000 dwt	IB	06.01
Karlsborg and Luleå	2000 dwt	IA	08.02
Härsholmen and Skelleftehamn	2000 dwt	IB	06.01
Holmsund, Rundvik and Husum	2000 dwt	IC	15.01
Örnsköldsvik	2000 dwt	IC	15.01
Ångermanälven	2000 dwt	IB	06.01
Hämsönd - Skutskär	2000 dwt	II	22.12
Köping and Västerås	2000 dwt	IC	27.12
Elästa	1300/2000 dwt	IC/II	27.12